



HESTORE.HU

elektronikai alkatrész áruház

EN: This Datasheet is presented by the manufacturer.

Please visit our website for pricing and availability at www.hestore.hu.

GQ16

Metal Push Button



Part-number Description

GQ16	★	□	◇	◆	△	▲	◎
Code of series	The Front shape	Contact structure	Lamp type	Connet type	Lamp color and colorized button	Lamp voltage	Crust material
	B Domed F Flat Round H High Round PF Super Flat Head + Flat Button PH Super Flat Head + High Flat Button	10 1NO 01 1NC 1NC can be made to order for some products No letter means signal lamp	D Dot E Ring	J Pin terminal L Long Pin Terminal No letter means screw terminal	R Red G Green Y Yellow O Orange B Blue W White N Black	AC/DC 6V AC/DC 12V AC/DC 24V AC/DC 36V Note: Other voltage can be made to order	N Nickel-plated Brass S Stainless steel A Stainless steel PC Engineering plastic Cr Chrome-plated (made to order)

Note: Pls read the catalogue carefully, and choose the right part-number according to the sign.

Specifications

Operating Temperature	-25°C~+55°C(no freezing) keep the air flowing around illuminated pushbutton
Operating Humidity	45~85%RH(no condensation)
Contact Resistance	≤50mΩ
Insulation Resistance	≥1000MΩ
Dielectric Strength	2000V, A C50Hz, 5 seconds
Vibration Resistance	50Hz, Amplitude 1.2mm
Shock Resistance	> 10g
Solder Heat Resistance	320°C(or 30W soldering iron) no more than 2 seconds)

Standard and Certification

Standard	Certification Mark	Certificate Authority /Certification Number
EN61058-1:2002+A2:2008	CE	VOV/VT11018807
EN60947-1:2004		CTS/CTS070706-01006-E

Switching Operation

Type	X	Y
Sign		
Diagram		

Note: Using two terminals, double-break and slow-motion contact

Y type NC switch can be made to order for individual product, pls check the product description.

Lamp Ratings

Lamp Type	LED lamp(AC/DC)
Led Color	R G Y O B W
Life	40000 hours (Reference)
Rated Voltage	AC/DC6V, AC/DC12V, AC/DC24V, AC/DC36V
Rated Current	About 15mA
DroppingWay	Inner resistor
Lamp Circuit Diagram	Using AC/DCLed lamp, the terminals have no difference of anode and cathode.

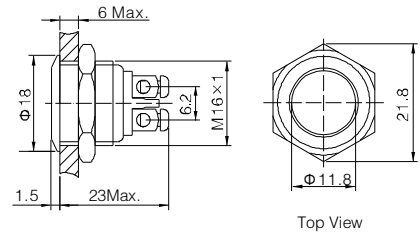


Note: DC LED and other voltage can be made to order.



GQ16F-10/0

- ◎ Φ 16mm Diameter
- ◎ Switch Rating:2A/36VDC
- ◎ Contact Configuration: 1NO(1NC can be made to order)
- ◎ Operation Type: Momentary
- ◎ The Front Shape: Flat Round
- ◎ The Crust Material(◎): Stainless steel(S)/ Nickel plated Brass(N)/Aluminium alloy black anodized(A)
- ◎ IP Degree: IP65,IK08

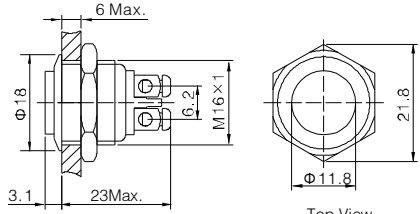


Top View



GQ16H-10/0

- ◎ Φ 16mm Diameter
- ◎ Switch Rating:2A/36VDC
- ◎ Contact Configuration: 1NO(1NC can be made to order)
- ◎ Operation Type: Momentary
- ◎ The Front Shape: High Round
- ◎ The Crust Material(◎): Stainless steel(S)/ Nickel plated Brass(N)/Aluminium alloy black anodized(A)
- ◎ IP Degree: IP65,IK08

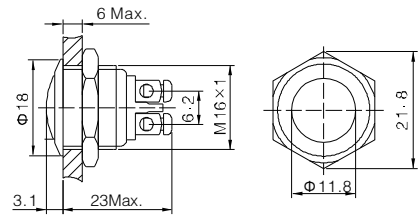


Top View



GQ16B-10/0

- ◎ Φ 16mm Diameter
- ◎ Switch Rating:2A/36VDC
- ◎ Contact Configuration: 1NO(1NC can be made to order)
- ◎ Operation Type: Momentary
- ◎ The Front Shape: Domed
- ◎ The Crust Material(◎): Stainless steel(S)/ Nickel plated Brass(N)/Aluminium alloy black anodized(A)
- ◎ IP Degree: IP65,IK08

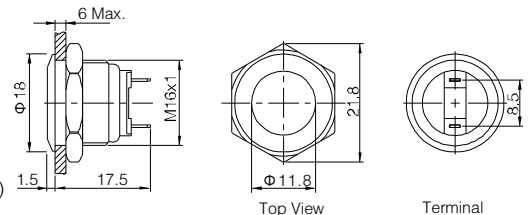


Top View



GQ16F-10/J/0

- ◎ Φ 16mm Diameter
- ◎ Switch Rating:2A/36VDC
- ◎ Contact Configuration: 1NO
- ◎ Operation Type: Momentary
- ◎ The Front Shape: Flat Round
- ◎ The Crust Material(◎): Stainless steel(S)/ Nickel plated Brass(N)/Aluminium alloy black anodized(A)
- ◎ IP Degree: IP65,IK08

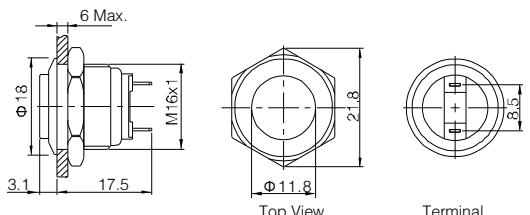


Terminal Arrangement



GQ16H-10/J/0

- ◎ Φ 16mm Diameter
- ◎ Switch Rating:2A/36VDC
- ◎ Contact Configuration: 1NO
- ◎ Operation Type: Momentary
- ◎ The Front Shape: High Round
- ◎ The Crust Material(◎): Stainless steel(S)/ Nickel plated Brass(N)/Aluminium alloy black anodized(A)
- ◎ IP Degree: IP65,IK08

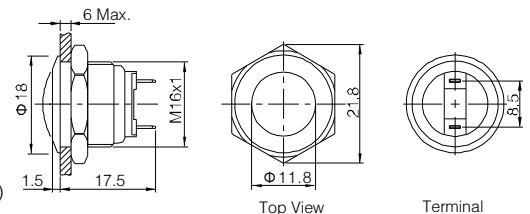


Terminal Arrangement



GQ16B-10/J/0

- ◎ Φ 16mm Diameter
- ◎ Switch Rating:2A/36VDC
- ◎ Contact Configuration: 1NO
- ◎ Operation Type: Momentary
- ◎ The Front Shape: Domed
- ◎ The Crust Material(◎): Stainless steel(S)/ Nickel plated Brass(N)/Aluminium alloy black anodized(A)
- ◎ IP Degree: IP65,IK08

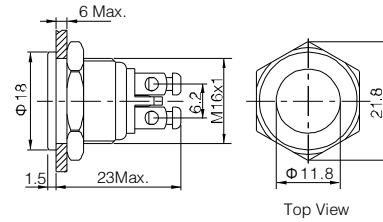


Terminal Arrangement

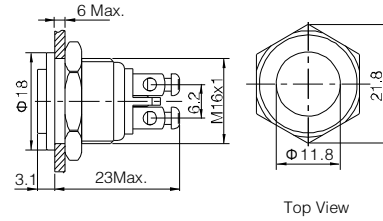
GQ16F-10/0 GQ16H-10/0 GQ16B-10/0		Material	Button	Stainless steel/ Aluminium alloy black anodized	GQ16F-10/J/0 GQ16H-10/J/0 GQ16B-10/J/0		Material	Button	Stainless steel/ Aluminium alloy black anodized
Terminal Type	Screw Terminal <th>Body</th> <td>Stainless steel/Nickel plated Brass /Aluminium alloy black anodized</td> <th>Terminal Type</th> <td>Pin Terminal(2×0.5mm)</td> <th>Body</th> <td>Stainless steel/Nickel plated Brass /Aluminium alloy black anodized</td>		Body	Stainless steel/Nickel plated Brass /Aluminium alloy black anodized	Terminal Type	Pin Terminal(2×0.5mm)		Body	Stainless steel/Nickel plated Brass /Aluminium alloy black anodized
Switching	X(double-break slow-motion contact)	Operation Pressure	About 4N	Base	PBT	Operation Pressure	About 4N	Base	PBT
Panel Thickness	1 ~ 6mm	Operation Travel	About 2.5mm	Switching	X(double-break slow-motion contact)	Operation Travel	About 2.5mm	Panel Thickness	1 ~ 6mm
Torque	0.6Nm	Panel Thickness	1 ~ 6mm	Torque	0.6Nm	Torque	0.6Nm	Mechanical Life	1,000,000 cycles
Mechanical Life	1,000,000 cycles	Mechanical Life	1,000,000 cycles	Electrical Life	200,000 cycles	Electrical Life	200,000 cycles	RoHS	Made to order
Electrical Life	200,000 cycles	RoHS	Made to order	Electrical Life	200,000 cycles	RoHS	Made to order	Electrical Life	200,000 cycles



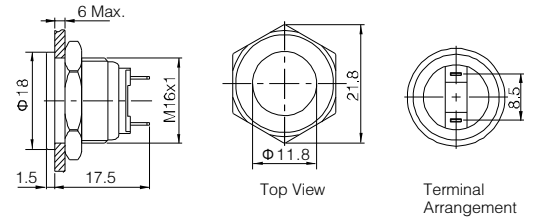
- ⊙ Φ 16mm Diameter
- ⊙ Switch Rating:2A/36VDC
- ⊙ Contact Configuration: 1NO(1NC can be made to order)
- ⊙ Operation Type: Momentary
- ⊙ The Front Shape: Flat Round
- ⊙ The Crust Material(⊙): Stainless steel(S)/ Nickel plated Brass(N)
- ⊙ IP Degree: IP65,IK08



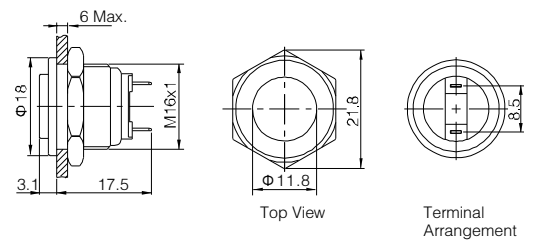
- ⊙ Φ 16mm Diameter
- ⊙ Switch Rating:2A/36VDC
- ⊙ Contact Configuration: 1NO(1NC can be made to order)
- ⊙ Operation Type: Momentary
- ⊙ The Front Shape: High Round
- ⊙ The Crust Material(⊙): Stainless steel(S)/ Nickel plated Brass(N)
- ⊙ IP Degree: IP65,IK08



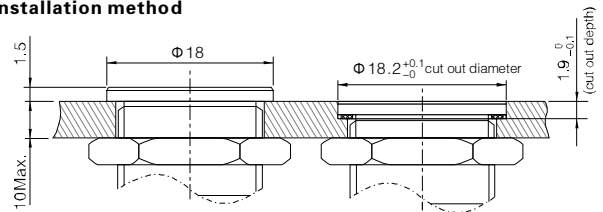
- ⊙ Φ 16mm Diameter
- ⊙ Switch Rating:2A/36VDC
- ⊙ Contact Configuration: 1NO(1NC can be made to order)
- ⊙ Operation Type: Momentary
- ⊙ The Front Shape: Flat Round
- ⊙ The Crust Material(⊙): Stainless steel(S)/ Nickel plated Brass(N)
- ⊙ IP Degree: IP65,IK08



- ⊙ Φ 16mm Diameter
- ⊙ Switch Rating:2A/36VDC
- ⊙ Contact Configuration: 1NO(1NC can be made to order)
- ⊙ Operation Type: Momentary
- ⊙ The Front Shape: High Round
- ⊙ The Crust Material(⊙): Stainless steel(S)/ Nickel plated Brass(N)
- ⊙ IP Degree: IP65,IK08



GQ16 super flat anti-vandal metal push button installation method

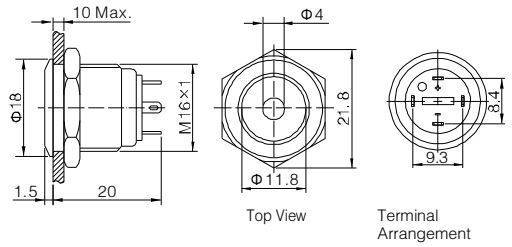


GQ16PF-10/0 GQ16PH-10/0		Material	Button	Stainless steel	GQ16PF-10/J/0 GQ16PH-10/J/0		Material	Button	Stainless steel/Nickel plated Brass
Terminal Type	Screw Terminal		Body	Stainless steel/Nickel plated Brass	Terminal Type	Pin Terminal(2×0.5mm)		Body	Stainless steel/Nickel plated Brass
	Swi tching		X(double-break slow-motion contact)	Base		PBT		Swi tching	X(double-break slow-motion contact)
Panel Thickness	1 ~ 6mm	Operation Pressure	About 4N	Panel Thickness	1 ~ 6mm	Operation Pressure	About 4N		
Torque	0.6Nm	Operation Travel	About 2.5mm	Torque	5 ~ 14Nm	Operation Travel	About 2.5mm		
Mechanical Life	1,000,000 cycles			Mechanical Life	1,000,000 cycles				
Electrical Life	200,000 cycles	RoHS	Made to order	Electrical Life	200,000 cycles	RoHS	Made to order		



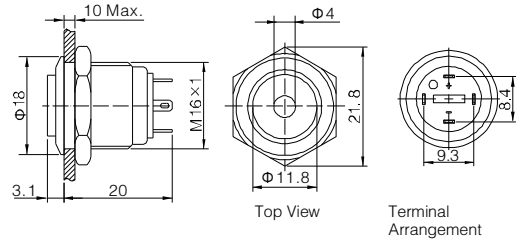
GQ16F-10D/J/Δ/▲/○

- ⊙ For signal lamp, part number is: GQ16F-D/J/Δ/▲/○
- ⊙ Φ 16mm Diameter
- ⊙ Switch Rating: 2A/36VDC
- ⊙ Contact Configuration: 1NO
- ⊙ Operation Type: Momentary
- ⊙ LED Color(Δ): **R G Y O B W**
- ⊙ LED Voltage(▲): 6V/12V/24V/36V(need external resistance)
- ⊙ The Crust Material(⊙): Stainless steel(S)/ Aluminium alloy black anodized(A)
- ⊙ IP Degree: IP65, IK08



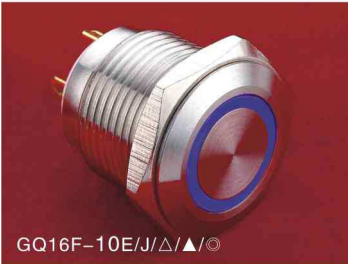
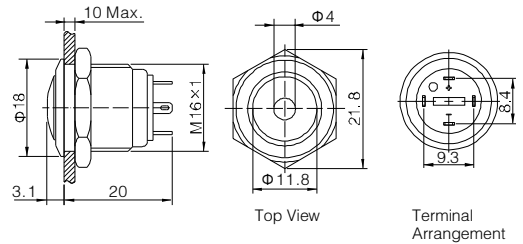
GQ16H-10D/J/Δ/▲/○

- ⊙ For signal lamp, part number is: GQ16H-D/J/Δ/▲/○
- ⊙ Φ 16mm Diameter
- ⊙ Switch Rating: 2A/36VDC
- ⊙ Contact Configuration: 1NO
- ⊙ Operation Type: Momentary
- ⊙ LED Color(Δ): **R G Y O B W**
- ⊙ LED Voltage(▲): 6V/12V/24V/36V(need external resistance)
- ⊙ The Crust Material(⊙): Stainless steel(S)/ Aluminium alloy black anodized(A)
- ⊙ IP Degree: IP65, IK08



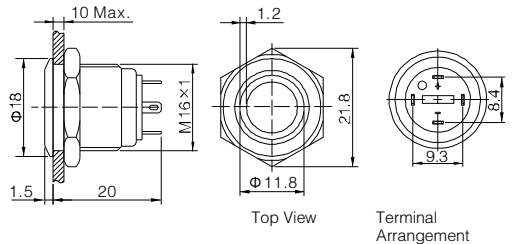
GQ16B-10D/J/Δ/▲/○

- ⊙ For signal lamp, part number is: GQ16B-D/J/Δ/▲/○
- ⊙ Φ 16mm Diameter
- ⊙ Switch Rating: 2A/36VDC
- ⊙ Contact Configuration: 1NO
- ⊙ Operation Type: Momentary
- ⊙ LED Color(Δ): **R G Y O B W**
- ⊙ LED Voltage(▲): 6V/12V/24V/36V(need external resistance)
- ⊙ The Crust Material(⊙): Stainless steel(S)/ Aluminium alloy black anodized(A)
- ⊙ IP Degree: IP65, IK08



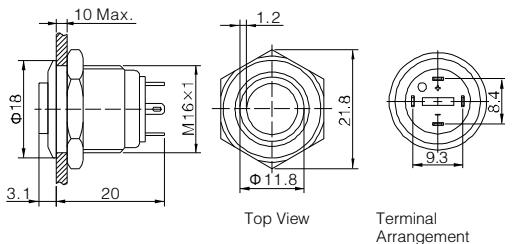
GQ16F-10E/J/Δ/▲/○

- ⊙ For signal lamp, part number is: GQ16F-E/J/Δ/▲/○
- ⊙ Φ 16mm Diameter
- ⊙ Switch Rating: 2A/36VDC
- ⊙ Contact Configuration: 1NO
- ⊙ Operation Type: Momentary
- ⊙ LED Color(Δ): **R G Y O B W**
- ⊙ LED Voltage(▲): 6V/12V/24V/36V(need external resistance)
- ⊙ The Crust Material(⊙): Stainless steel(S)/ Aluminium alloy black anodized(A)
- ⊙ IP Degree: IP65, IK08



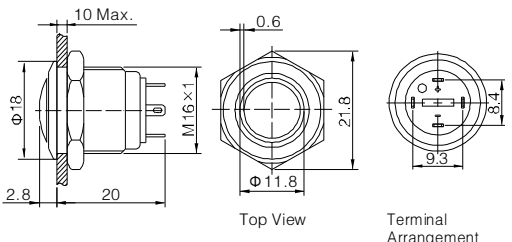
GQ16H-10E/J/Δ/▲/○

- ⊙ For signal lamp, part number is: GQ16H-E/J/Δ/▲/○
- ⊙ Φ 16mm Diameter
- ⊙ Switch Rating: 2A/36VDC
- ⊙ Contact Configuration: 1NO
- ⊙ Operation Type: Momentary
- ⊙ LED Color(Δ): **R G Y O B W**
- ⊙ LED Voltage(▲): 6V/12V/24V/36V(need external resistance)
- ⊙ The Crust Material(⊙): Stainless steel(S)/ Aluminium alloy black anodized(A)
- ⊙ IP Degree: IP65, IK08



GQ16B-10E/J/Δ/▲/○

- ⊙ For signal lamp, part number is: GQ16B-E/J/Δ/▲/○
- ⊙ Φ 16mm Diameter
- ⊙ Switch Rating: 2A/36VDC
- ⊙ Contact Configuration: 1NO
- ⊙ Operation Type: Momentary
- ⊙ LED Color(Δ): **R G Y O B W**
- ⊙ LED Voltage(▲): 6V/12V/24V/36V(need external resistance)
- ⊙ The Crust Material(⊙): Stainless steel(S)/ Aluminium alloy black anodized(A)
- ⊙ IP Degree: IP65, IK08



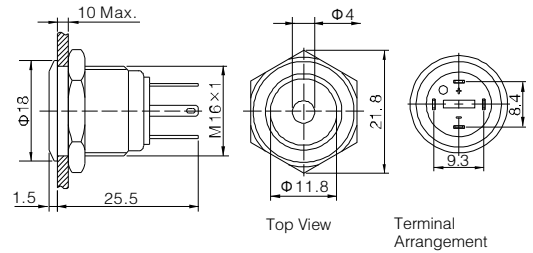
GQ16F-10D/J/Δ/▲/○ GQ16H-10D/J/Δ/▲/○ GQ16B-10D/J/Δ/▲/○		GQ16F-10E/J/Δ/▲/○ GQ16H-10E/J/Δ/▲/○ GQ16B-10E/J/Δ/▲/○	
Terminal Type	Pin Terminal(2×0.5mm)	Material	Button
Switching	x(double-break slow-motion contact)		Stainless steel/ Aluminium alloy black anodized
Panel Thickness	1~6mm		Body
Torque	0.6Nm		Stainless steel/ Aluminium alloy black anodized
Mechanical Life	1,000,000 cycles		Base
Electrical Life	200,000 cycles		PBT
		Made to order	About 4N
		Operation Travel	About 2.5mm
		RoHS	Made to order

Lamp Ratings	Lamp Type	dot illuminated/ring illuminated(LED)				
	Led Color	R Y O	G B W			
	Rated Voltage U_e	AC/DC 1.8V		AC/DC 2.8V		
	Rated Current	15mA				
	Life	40000 hours				
Current-Limiting Resistance Configuration Table	Operating Voltage(U)	6V	12V	24V	36V	
	Current-Limiting Resistance (R)	R Y O	270 Ω, 1/4W	820 Ω, 1/2W	1.5K Ω, 1W	2.7K Ω, 1W
		G B W	220 Ω, 1/4W	680 Ω, 1/2W	1.5K Ω, 1W	2.7K Ω, 1W



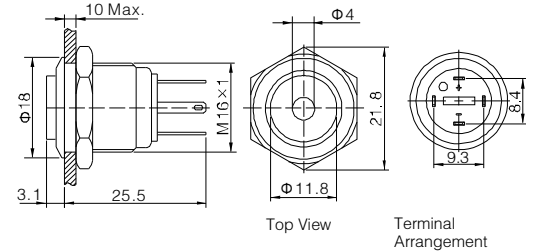
GQ16F-10D/JL/Δ/▲/◎

- ◎ For signal lamp, part number is: GQ16F-D/JL/Δ/▲/◎
- ◎ Φ 16mm Diameter
- ◎ Switch Rating: 2A/36VDC
- ◎ Contact Configuration: 1NO
- ◎ Operation Type: Momentary
- ◎ LED Color(Δ): **R G Y O B W**
- ◎ LED Voltage(▲): 6V/12V/24V/36V(need external resistance)
- ◎ The Crust Material(◎): Stainless steel(S)/ Aluminium alloy black anodized(A)
- ◎ IP Degree: IP65, IK08



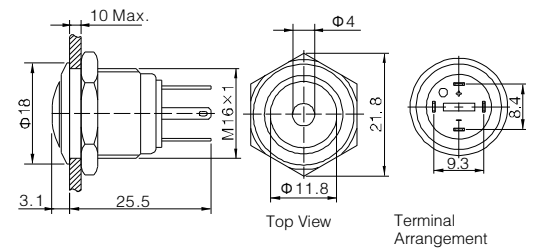
GQ16H-10D/JL/Δ/▲/◎

- ◎ For signal lamp, part number is: GQ16H-D/JL/Δ/▲/◎
- ◎ Φ 16mm Diameter
- ◎ Switch Rating: 2A/36VDC
- ◎ Contact Configuration: 1NO
- ◎ Operation Type: Momentary
- ◎ LED Color(Δ): **R G Y O B W**
- ◎ LED Voltage(▲): 6V/12V/24V/36V(need external resistance)
- ◎ The Crust Material(◎): Stainless steel(S)/ Aluminium alloy black anodized(A)
- ◎ IP Degree: IP65, IK08



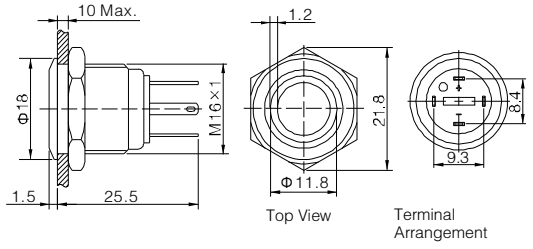
GQ16B-10D/JL/Δ/▲/◎

- ◎ For signal lamp, part number is: GQ16B-D/JL/Δ/▲/◎
- ◎ Φ 16mm Diameter
- ◎ Switch Rating: 2A/36VDC
- ◎ Contact Configuration: 1NO
- ◎ Operation Type: Momentary
- ◎ LED Color(Δ): **R G Y O B W**
- ◎ LED Voltage(▲): 6V/12V/24V/36V(need external resistance)
- ◎ The Crust Material(◎): Stainless steel(S)/ Aluminium alloy black anodized(A)
- ◎ IP Degree: IP65, IK08



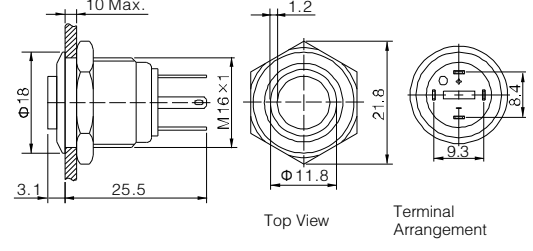
GQ16F-10E/JL/Δ/▲/◎

- ◎ For signal lamp, part number is: GQ16F-E/JL/Δ/▲/◎
- ◎ Φ 16mm Diameter
- ◎ Switch Rating: 2A/36VDC
- ◎ Contact Configuration: 1NO
- ◎ Operation Type: Momentary
- ◎ LED Color(Δ): **R G Y O B W**
- ◎ LED Voltage(▲): 6V/12V/24V/36V(need external resistance)
- ◎ The Crust Material(◎): Stainless steel(S)/ Aluminium alloy black anodized(A)
- ◎ IP Degree: IP65, IK08



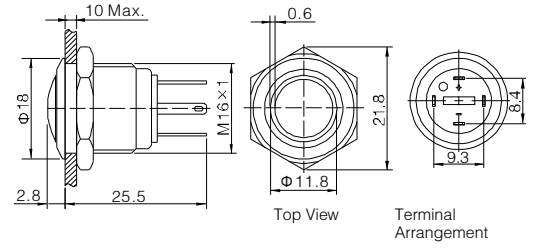
GQ16H-10E/JL/Δ/▲/◎

- ◎ For signal lamp, part number is: GQ16H-E/JL/Δ/▲/◎
- ◎ Φ 16mm Diameter
- ◎ Switch Rating: 2A/36VDC
- ◎ Contact Configuration: 1NO
- ◎ Operation Type: Momentary
- ◎ LED Color(Δ): **R G Y O B W**
- ◎ LED Voltage(▲): 6V/12V/24V/36V(need external resistance)
- ◎ The Crust Material(◎): Stainless steel(S)/ Aluminium alloy black anodized(A)
- ◎ IP Degree: IP65, IK08



GQ16B-10E/JL/Δ/▲/◎

- ◎ For signal lamp, part number is: GQ16B-E/JL/Δ/▲/◎
- ◎ Φ 16mm Diameter
- ◎ Switch Rating: 2A/36VDC
- ◎ Contact Configuration: 1NO
- ◎ Operation Type: Momentary
- ◎ LED Color(Δ): **R G Y O B W**
- ◎ LED Voltage(▲): 6V/12V/24V/36V(need external resistance)
- ◎ The Crust Material(◎): Stainless steel(S)/ Aluminium alloy black anodized(A)
- ◎ IP Degree: IP65, IK08

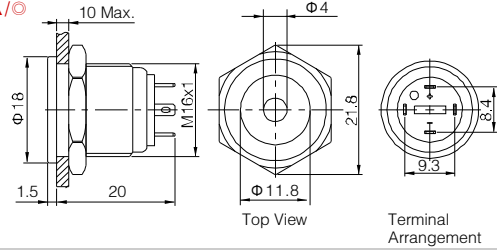


GQ16F-10D/JL/Δ/▲/◎		GQ16F-10E/JL/Δ/▲/◎	
GQ16H-10D/JL/Δ/▲/◎		GQ16H-10E/JL/Δ/▲/◎	
GQ16B-10D/JL/Δ/▲/◎		GQ16B-10E/JL/Δ/▲/◎	
Terminal Type	Pin Terminal(2×0.5mm)	Material	Button Stainless steel/ Aluminium alloy black anodized
Switching	x(double-break slow-motion contact)		Body Stainless steel/ Aluminium alloy black anodized
Panel Thickness	1~6mm		Base PBT
Torque	0.6Nm	Made to order	About 4N
Mechanical Life	1,000,000 cycles	Operation Travel	About 2.5mm
Electrical Life	200,000 cycles	RoHS	Made to order

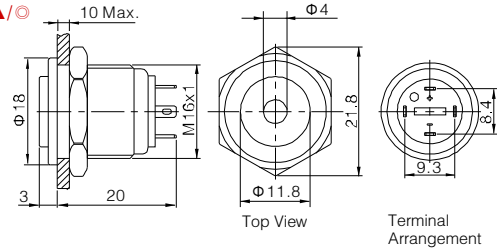
Lamp Ratings	Lamp Type	dot illuminated/ring illuminated(LED)			
	Led Color	R Y O	G B W		
	Rated Voltage_{Ue}	AC/DC 1.8V		AC/DC 2.8V	
	Rated Current	15mA			
	Life	40000 hours			
Current-Limiting Resistance Configuration Table	Operating Voltage(U)	6V	12V	24V	36V
	Current-Limiting Resistance (R)	R Y O 270Ω, 1/4W	820Ω, 1/2W	1.5KΩ, 1W	2.7KΩ, 1W
		G B W 220Ω, 1/4W	680Ω, 1/2W	1.5KΩ, 1W	2.7KΩ, 1W



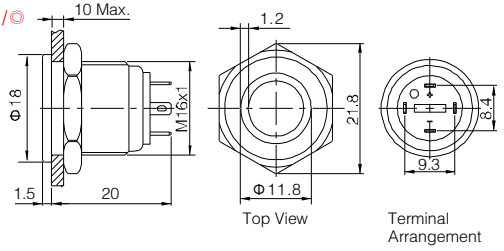
- ⊙ If you need indicator, The model number is: GQ16PF-D/J/Δ/▲/⊙
- ⊙ Install diameter: Φ16mm
- ⊙ Switch Rating: 2A/36VDC
- ⊙ Contact Configuration: 1NO
- ⊙ Operation Type: Momentary
- ⊙ LED Color (Δ): **R G Y O B W**
- ⊙ LED Voltage (▲): 6V/12V/24V/36V (Need outer resistance)
- ⊙ The Crust Material (⊙): Stainless steel (S)/Aluminium alloy (A)
- ⊙ IP Degree: IP65, IK08



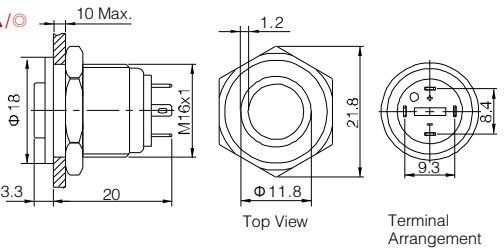
- ⊙ If you need indicator, The model number is: GQ16PH-D/J/Δ/▲/⊙
- ⊙ Install diameter: Φ16mm
- ⊙ Switch Rating: 2A/36VDC
- ⊙ Contact Configuration: 1NO
- ⊙ Operation Type: Momentary
- ⊙ LED Color (Δ): **R G Y O B W**
- ⊙ LED Voltage (▲): 6V/12V/24V/36V (Need outer resistance)
- ⊙ The Crust Material (⊙): Stainless steel (S)/Aluminium alloy (A)
- ⊙ IP Degree: IP65, IK08



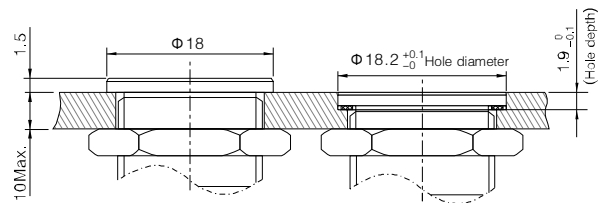
- ⊙ If you need indicator, The model number is: GQ16PF-E/J/Δ/▲/⊙
- ⊙ Install diameter: Φ16mm
- ⊙ Switch Rating: 2A/36VDC
- ⊙ Contact Configuration: 1NO
- ⊙ Operation Type: Momentary
- ⊙ LED Color (Δ): **R G Y O B W**
- ⊙ LED Voltage (▲): 6V/12V/24V/36V (Need outer resistance)
- ⊙ The Crust Material (⊙): Stainless steel (S)/Aluminium alloy (A)
- ⊙ IP Degree: IP65, IK08



- ⊙ If you need indicator, The model number is: GQ16PH-E/J/Δ/▲/⊙
- ⊙ Install diameter: Φ16mm
- ⊙ Switch Rating: 2A/36VDC
- ⊙ Contact Configuration: 1NO
- ⊙ Operation Type: Momentary
- ⊙ LED Color (Δ): **R G Y O B W**
- ⊙ LED Voltage (▲): 6V/12V/24V/36V (Need outer resistance)
- ⊙ The Crust Material (⊙): Stainless steel (S)/Aluminium alloy (A)
- ⊙ IP Degree: IP65, IK08



GQ16 super flat type install way:

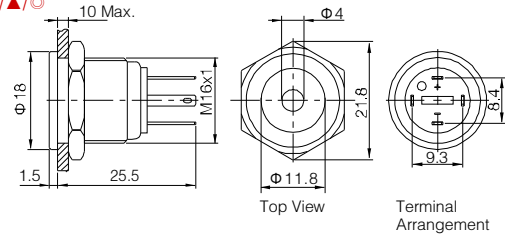


GQ16PF-10D/J/Δ/▲/⊙		GQ16PF-10E/J/Δ/▲/⊙		
GQ16PH-10D/J/Δ/▲/⊙		GQ16PH-10E/J/Δ/▲/⊙		
Terminal Type	Pin Terminal (2 x 0.5mm)	Material	Button	Stainless Steel/Aluminium alloy
Switching	x(double-break slow-motion contact)		Body	Stainless Steel/Aluminium alloy
Panel Thickness	1 ~ 6mm		Base	PBT
Torque	0.6Nm	Made to order	About 4N	
Mechanical Life	1,000,000 cycles	Operation Travel	About 2.5mm	
Electrical Life	200,000 cycles	RoHS	Made to order	

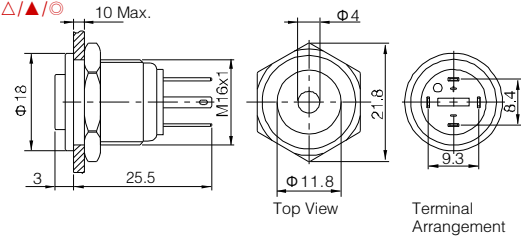
Lamp Ratings	Lamp Type	dot illuminated/ring illuminated(LED)			
	Led Color	R Y O	G B W		
	Rated Voltage Ue	AC/DC 1.8V		AC/DC 2.8V	
	Rated Current	15mA			
	Life	40000 hours			
Current-Limiting Resistance Configuration Tble	Operating Voltage(U)	6V	12V	24V	36V
	Current-Limiting Resistance (R)	R Y O 270 Ω, 1/4W	820 Ω, 1/2W	1.5K Ω, 1W	2.7K Ω, 1W
	G B W 220 Ω, 1/4W	680 Ω, 1/2W	1.5K Ω, 1W	2.7K Ω, 1W	



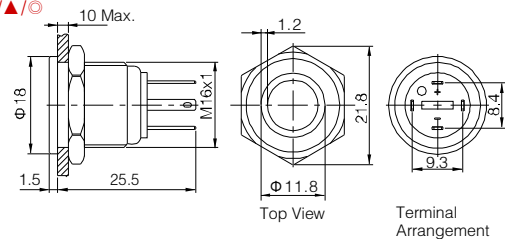
- ⊙ If you need indicator, The model number is: GQ16PF-D/JL/Δ/▲/⊙
- ⊙ Install diameter: Φ16mm
- ⊙ Switch Rating: 2A/36VDC
- ⊙ Contact Configuration: 1NO
- ⊙ Operation Type: Momentary
- ⊙ LED Color(Δ): **R G Y O B W**
- ⊙ LED Voltage(▲): 6V/12V/24V/36V(Need outer resistance)
- ⊙ TheCrustMaterial(⊙): Stainlesssteel(S)/Aluminiumalloy(A)
- ⊙ IP Degree: IP65,IK08



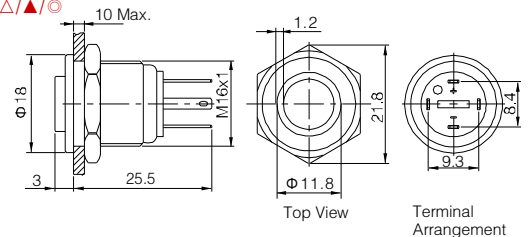
- ⊙ If you need indicator, The model number is: GQ16PH-D/JL/Δ/▲/⊙
- ⊙ Install diameter: Φ16mm
- ⊙ Switch Rating: 2A/36VDC
- ⊙ Contact Configuration: 1NO
- ⊙ Operation Type: Momentary
- ⊙ LED Color(Δ): **R G Y O B W**
- ⊙ LED Voltage(▲): 6V/12V/24V/36V(Need outer resistance)
- ⊙ TheCrustMaterial(⊙): Stainlesssteel(S)/Aluminiumalloy(A)
- ⊙ IP Degree: IP65,IK08



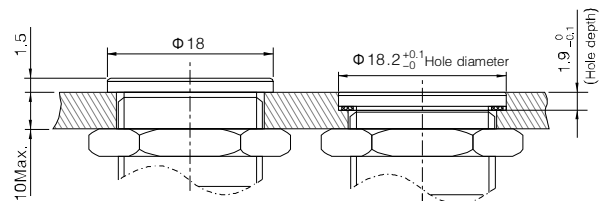
- ⊙ If you need indicator, The model number is: GQ16PF-E/JL/Δ/▲/⊙
- ⊙ Install diameter: Φ16mm
- ⊙ Switch Rating: 2A/36VDC
- ⊙ Contact Configuration: 1NO
- ⊙ Operation Type: Momentary
- ⊙ LED Color(Δ): **R G Y O B W**
- ⊙ LED Voltage(▲): 6V/12V/24V/36V(Need outer resistance)
- ⊙ TheCrustMaterial(⊙): Stainlesssteel(S)/Aluminiumalloy(A)
- ⊙ IP Degree: IP65,IK08



- ⊙ If you need indicator, The model number is: GQ16PH-E/JL/Δ/▲/⊙
- ⊙ Install diameter: Φ16mm
- ⊙ Switch Rating: 2A/36VDC
- ⊙ Contact Configuration: 1NO
- ⊙ Operation Type: Momentary
- ⊙ LED Color(Δ): **R G Y O B W**
- ⊙ LED Voltage(▲): 6V/12V/24V/36V(Need outer resistance)
- ⊙ TheCrustMaterial(⊙): Stainlesssteel(S)/Aluminiumalloy(A)
- ⊙ IP Degree: IP65,IK08



GQ16 super flat type install way:



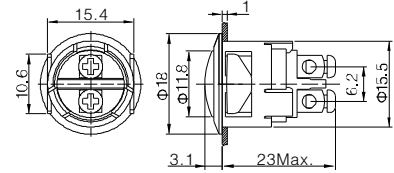
GQ16PF-10D/JL/Δ/▲/⊙		GQ16PF-10E/JL/Δ/▲/⊙		
GQ16PH-10D/JL/Δ/▲/⊙		GQ16PH-10E/JL/Δ/▲/⊙		
Terminal Type	Pin Terminal(2×0.5mm)	Material	Button	StainlessSteel/Aluminiumalloy
Switching	x(double-break slow-motion contact)		Body	StainlessSteel/Aluminiumalloy
Panel Thickness	1~6mm		Base	PBT
Torque	0.6m	Made to order	About 4N	
Mechanical Life	1,000,000 cycles	Operation Travel	About 2.5mm	
Electrical Life	200,000 cycles	RoHS	Made to order	

Lamp Ratings	Lamp Type	dot illuminated/ring illuminated(LED)			
	Led Color	R Y O	G B W		
	Rated VoltageUe	AC/DC 1.8V		AC/DC 2.8V	
	Rated Current	15mA			
	Life	40000 hours			
Current-Limiting Resistance Configuration Tble	Operating Voltage(U)	6V	12V	24V	36V
	Current-Limiting Resistance (R)	R Y O 270 Ω, 1/4W	820 Ω, 1/2W	1.5K Ω, 1W	2.7K Ω, 1W
	G B W 220 Ω, 1/4W	680 Ω, 1/2W	1.5K Ω, 1W	2.7K Ω, 1W	



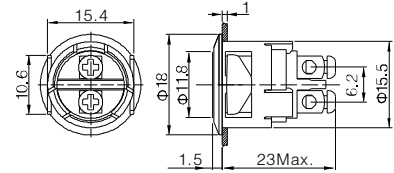
GQ16B-10/PC

- ⊙ Φ 16mm Diameter
- ⊙ Switch Rating:2A/36VDC
- ⊙ Contact Configuration: 1NO (1NC can be made to order)
- ⊙ Operation Type: Momentary
- ⊙ The Front Shape: Domed
- ⊙ The Crust Material(⊙): UV protection PC
- ⊙ IP Degree: IP65,IK02



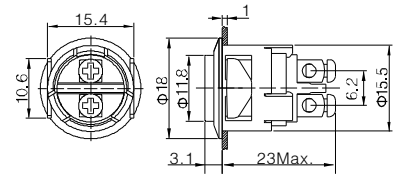
GQ16F-10/PC

- ⊙ Φ 16mm Diameter
- ⊙ Switch Rating:2A/36VDC
- ⊙ Contact Configuration: 1NO (1NC can be made to order)
- ⊙ Operation Type: Momentary
- ⊙ The Front Shape: Flat Round
- ⊙ The Crust Material(⊙): UV protection PC
- ⊙ IP Degree: IP65,IK02



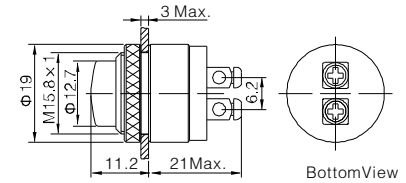
GQ16H-10/PC

- ⊙ Φ 16mm Diameter
- ⊙ Switch Rating:2A/36VDC
- ⊙ Contact Configuration: 1NO (1NC can be made to order)
- ⊙ Operation Type: Momentary
- ⊙ The Front Shape: High Flat Round
- ⊙ The Crust Material(⊙): UV protection PC
- ⊙ IP Degree: IP65,IK02



GQ16M-10

- ⊙ Φ 16mm Diameter
- ⊙ Switch Rating:2A/36VDC
- ⊙ Contact Configuration: 1NO
- ⊙ Operation Type: Momentary
- ⊙ Panel Thickness: 1~3mm
- ⊙ The Crust Material(⊙): Brass(Bronze-coloured)
- ⊙ IP Degree: IP40,IK09



GQ16B-10/PC GQ16F-10/PC GQ16H-10/PC		Material	Button	Stainless steel	GQ16M-10		Material	Button	Brass(Bronze-coloured)
	Body		UV protection PC		Body	Brass(Bronze-coloured)			
	Base		PBT		Base	PBT			
Terminal Type	Screw Terminal	Operation Pressure	About 4N	Terminal Type	Screw Terminal	Operation Pressure	About 8N		
Switching	X(double-break slow-motion contact)	Operation Travel	About 2.5mm	Switching	X(double-break slow-motion contact)	Operation Travel	About 3mm		
Panel Thickness	1mm			Panel Thickness	1 ~ 3mm				
Mechanical Life	1,000,000 cycles			Torque	0.6Nm				
Electrical Life	200,000 cycles			Mechanical Life	1,000,000 cycles				
		RoHS	Made to order	Electrical Life	200,000 cycles	RoHS	Made to order		