



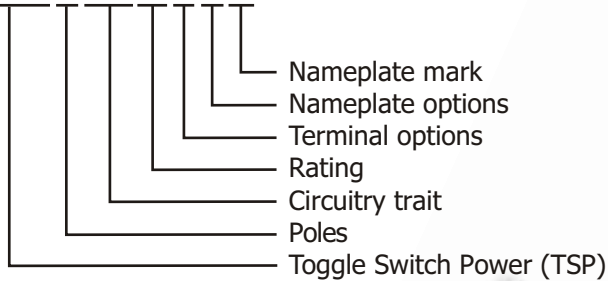
HESTORE.HU

elektronikai alkatrész áruház

EN: This Datasheet is presented by the manufacturer.

Please visit our website for pricing and availability at www.hestore.hu.

TSP102APB2



Specification:

- 1) Rating (if not described next to the switch):
 () 10 A 125 VAC; 6 A 250 VAC
 (A) 15 A 125 VAC; 10 A 250 VAC
 (AA) 20 A 125 VAC; 15 A 250 VAC
- 2) Contact Resistance: 50 mΩ max.
- 3) Insulation Resistance: 500 VDC 1000 MΩ min.
- 4) Dielectric strength: 1500 VAC, 1 minute
- 5) Operating Temperature: -55°C ~ +65°C
- 6) Electrical Life: 20000 cycles

CIRCUITRY TRAIT

01	ON	-	OFF
02	ON	-	ON
12	ON	-	(ON)
03	ON	OFF	ON
13	ON	OFF	(ON)
23	(ON)	OFF	(ON)

() indicates momentary

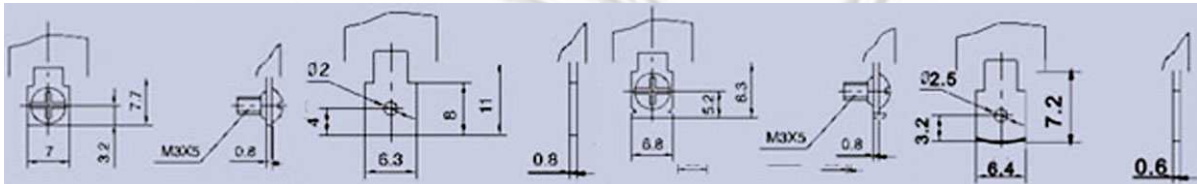
NAMEPLATE MARK

1	ON - OFF
2	ON - ON
3	ON - OFF - ON

BASE COLOUR

BR brown
 omitted when standard
 colour (black)

TERMINAL OPTIONS



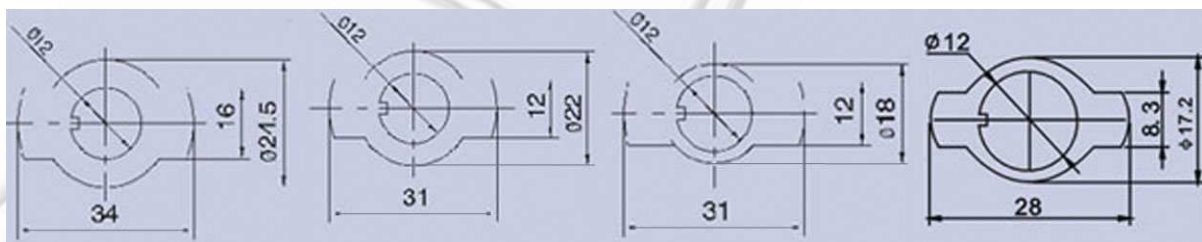
Screw terminal ()

PC terminal (P)

Hitch terminal (H)

Solder terminal (S)

NAMEPLATE OPTIONS



(A)

(B)

(C)

(D)

PROTECTIV CAP



TSPC01

TSPC02

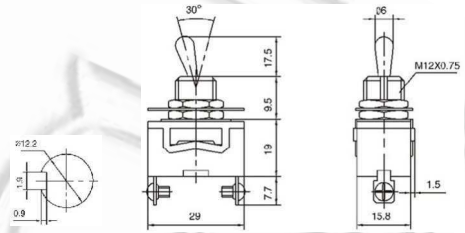
TSPC03

TSPC06

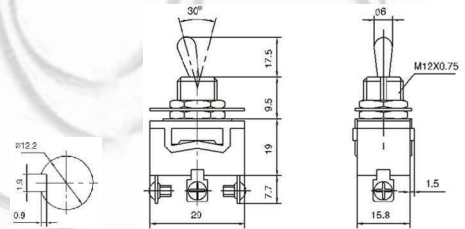
Ninigi



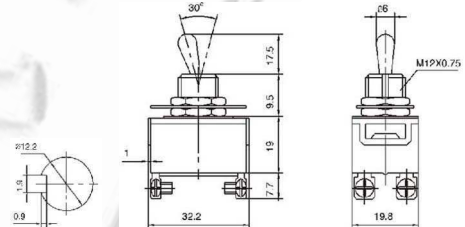
TSP101 ON-OFF
TSP101A ON-OFF
 SPST 2P



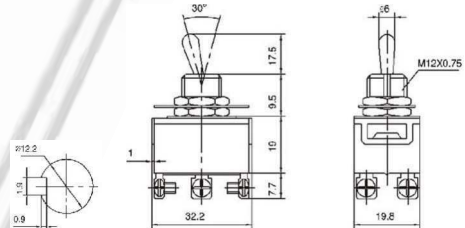
TSP102 TSP102A ON-ON
TSP112 TSP112A ON-(ON)
TSP103 TSP103A ON-OFF-ON
TSP113 TSP113A ON-OFF-(ON)
TSP123 TSP123A (ON)-OFF-(ON)
 SPDT 3P



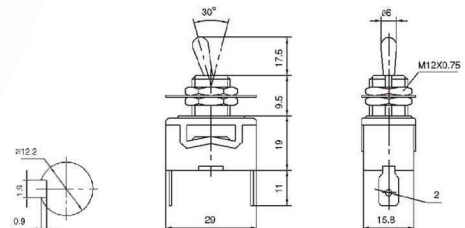
TSP201 ON-OFF
TSP201A ON-OFF
 DPST 4P



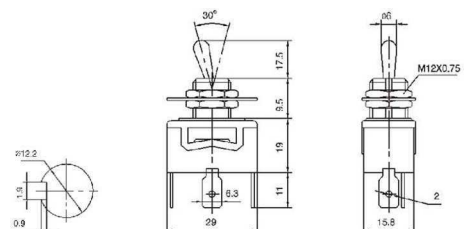
TSP202 TSP202A ON-ON
TSP212 TSP212A ON-(ON)
TSP203 TSP203A ON-OFF-ON
TSP213 TSP213A ON-OFF-(ON)
TSP223 TSP223A (ON)-OFF-(ON)
 DPDT 6P



TSP101P ON-OFF
TSP101AP ON-OFF
 SPST 2P



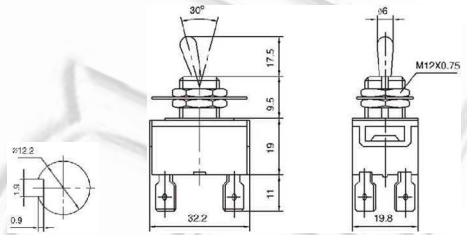
TSP102P TSP102AP ON-ON
TSP112P TSP112AP ON-(ON)
TSP103P TSP103AP ON-OFF-ON
TSP113P TSP113AP ON-OFF-(ON)
TSP123P TSP123AP (ON)-OFF-(ON)
 SPDT 3P



Ninigi



TSP201P ON-OFF
TSP201AP ON-OFF
 DPST 4P



TSP202P TSP202AP ON-ON
TSP212P TSP212AP ON-(ON)
TSP203P TSP203AP ON-OFF-ON
TSP213P TSP213AP ON-OFF-(ON)
TSP223P TSP223AP (ON)-OFF-(ON)
 DPDT 6P

