



HESTORE.HU

elektronikai alkatrész áruház

EN: This Datasheet is presented by the manufacturer.

Please visit our website for pricing and availability at www.hestore.hu.

Quick Installation Guide

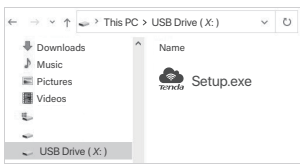
Wireless USB Adapter

W311MI/U2/U11

Package contents

- Wireless USB Adapter x 1
- Quick Installation Guide x 1

2. Double-click **Setup.exe** in the pop-up window.



Tips
If the pop-up window does not appear, refer to **Q3** in **FAQ**.

Wait a moment until the initialization finishes. Now you can connect to the Wi-Fi network.



FAQ

Q1. Nothing happens after the wireless USB adapter is inserted into the USB port of the computer. What should I do?

A1. Try the following solutions:

Refer to **Q2** to check whether the computer has a **USB Drive (X:)**. If yes, double-click the **USB Drive (X:)** to install the wireless USB adapter. If not, reinsert the wireless USB adapter into another USB port on the computer.

Q2. The pop-up window does not appear after the wireless USB adapter is connected to the computer. What should I do?

A2. Try the following solutions (Example: Windows 10):

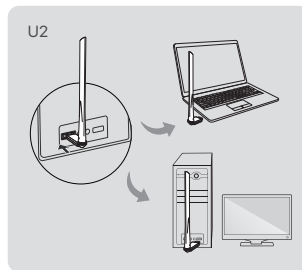
1. Double-click **Computer (C:)** on the desktop.
2. Double-click **USB Drive (X:)**, and follow the instructions to install the wireless USB adapter.

Install the wireless USB adapter (Example: Windows 10)

Tips

- This wireless USB adapter is compatible with mainstream operating systems, including Windows 7/10/11 and Linux.
- For better internet experience, you are recommended to uninstall any installed wireless USB adapter (see **Scenario 2** in the **Appendix**) and disable or toggle off the built-in wireless adapter in the computer (see **Scenario 1** in the **Appendix**) before installing the wireless USB adapter.

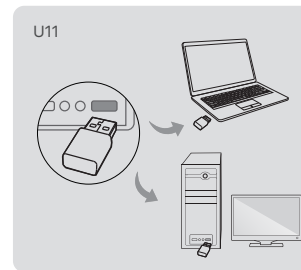
1. Connect your wireless USB adapter to a USB port on your computer.



or

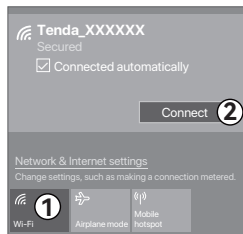


or



Connect to a Wi-Fi network (Example: Windows 10)

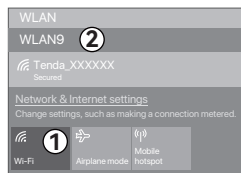
- For computers without built-in wireless adapters: Select the desired Wi-Fi, and then click **Connect**.



- For computers with built-in wireless adapters: If you use this wireless USB adapter to connect to a Wi-Fi, select the WLAN corresponding to the wireless USB adapter, such as **WLAN9**. Then connect to the Wi-Fi.

Tips

WLAN is the default name of the built-in wireless adapter in the computer.



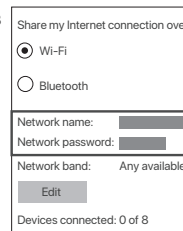
Switch hotspot mode (Example: Windows 10)

After connecting a wireless USB adapter to a computer that is connected to the internet using an Ethernet cable, the wireless USB adapter can function as a soft AP to enable nearby wireless clients to access the internet.



WiFi-enabled devices connect to the hotspot of the computer:

1. Install the wireless USB adapter.
2. Click or , and click to open mobile hotspot.
3. Right-click , and click **Go to Settings**, you will see the **Network name** and **Network password** of the **Wi-Fi**.



Connect your wireless devices (such as smartphones) to the Wi-Fi network to access the internet.

Appendix

Scenario 1: Disable or toggle off the built-in wireless adapter in the computer.

- **Disable the built-in wireless adapter in the computer (Example: Windows 10)**

1. Click or , and then select **Network & Internet settings**.
2. Click **Change adapter options**.
3. Find and right-click the built-in wireless adapter in the computer, and click **Disable**.

- **Toggle off the WLAN function of the built-in wireless adapter in the computer (Only available for Windows 11)**

1. Right-click or , and then select **Network & Internet settings**.
2. Find and click **WLAN** to enter the settings page.



3. Toggle off the WLAN corresponding to the built-in wireless adapter of the computer.

Scenario 2: Uninstall the existing wireless USB adapter driver on your computer. (Example: Windows 10)

1. Click , and then click .
2. Click **Apps**.
3. Target and click the wireless USB adapter program you want to uninstall, and click **Uninstall**.

Get support and services

For technical specifications, user guides and more information, please visit the product page or service page on www.tendacn.com. Multiple languages are available. You can see the product model on the product.



<https://www.tendacn.com/service/default.html>

CE Mark Warning

This is a Class B product. In a domestic environment, this product may cause radio interference, in which case the user may be required to take adequate measures. **NOTE:** (1) The manufacturer is not responsible for any radio or TV interference caused by unauthorized modifications to this equipment. (2) To avoid unnecessary radiation interference, it is recommended to use a shielded RJ45 cable.

Declaration of Conformity

Hereby, SHENZHEN TENDA TECHNOLOGY CO., LTD. declares that the device is in compliance with Directive 2014/53/EU. The full text of the EU declaration of conformity is available at the following internet address: <https://www.tendacn.com/download/list-9.html>

Operating Frequency/Max Output Power

English: Operating Frequency/Max Output Power
Polski: Częstotliwość pracy / Maksymalna moc wyjściowa
Deutsch: Betriebsfrequenz/Max. Ausgangsleistung
Русский: Рабочая частота/макс. выходная мощность
Français: Fréquence de fonctionnement/Puissance de sortie maximale
Nederlands: Bedrijfsfrequentie/Maximaal uitgangsvermogen
Čeština: Provozní frekvence/maximální výstupní výkon
Română: Frecvența de funcționare/Putea maximă de ieșire
Português: Frequência de Funcionamento/Potência Máxima de Saída
Svenska: Driftsfrekvens / Max Utleffekt
Slovenský: Prevádzková frekvencia/maximálny výstupný výkon
Ελληνικά: Συχνότητα λειτουργίας/Μέγιστη Ισχύς Εξόδου
Magyar: Működési frekvencia/Maximális kimeneti teljesítmény
Italiano: Frequenza operativa/Potenza di uscita massima
Български: Работна честота/Максимална изходна мощност
Español: Frecuencia operativa/Potencia de salida máxima
Eesti: Töösagedus/Max väljundvõimsus
Dansk: Driftsfrekvens/Maks. Udgangs effekt
Suomi: Toiminta-aajuus/maksimilähtöteho
Hrvatski: Radna frekvencija/Maksimalna izlazna snaga
Latviešu: Operējošās frekvences/ Maksimālā jauda
Lietuvių: Darbinis dažnis /maksimali išėjimo galia
Slovenščina: Delovna frekvenca/Največja izhodna moč
Türkçe: Çalışma Frekans/Maks. Çıkış Gücü

عربي: تردد التشغيل / الحد الأقصى لطاقة الإخراج

2412MHz-2472MHz/20dBm
U11: 5150MHz-5250MHz (indoor use only)/23dBm

Safety Precautions

Before operating, read the operation instructions and precautions to be taken, and follow them to prevent accidents. The warning and danger items in other documents do not cover all the safety precautions that must be followed. They are only supplementary information, and the installation and maintenance personnel need to understand the basic safety precautions to be taken.

- Do not use the device in a place where wireless devices are not allowed.
- Operating temperature: 0°C - 40°C.
- Keep the device away from water, fire, high electric field, high magnetic field, and inflammable and explosive items.
- If such phenomena as smoke, abnormal sound or smell appear when you use the device, immediately stop using it and contact the after-sales service personnel.
- Disassembling or modifying the device or its accessories without authorization voids the warranty, and might cause safety hazards.

For the latest safety precautions, see **Safety and Regulatory Information on www.tendacn.com**.

	AT	BE	BG	CH	CY	CZ	DE	DK	EE	EL	ES	FI	FR	HR	HU	IE
	IS	IT	LI	LT	LV	LU	MT	NL	NO	PL	PT	RO	SE	SI	SK	UK(NI)

English-Attention: In EU member states, EFTA countries, Northern Ireland and Great Britain, the operation in the frequency range 5150MHz-5250MHz (U11) is only permitted indoors.

Polski-Uwaga: W państwach członkowskich UE, krajach Europejskiego Stowarzyszenia Wolnego Handlu (EFTA), Irlandii Północnej i Wielkiej Brytanii praca w zakresie częstotliwości 5150MHz-5250MHz (U11) jest dozwolona tylko w pomieszczeniach.

Deutsch-Achtung: In den EU-Mitgliedsstaaten, den EFTA-Ländern, Nordirland und Großbritannien ist der Betrieb im Frequenzbereich 5150MHz-5250MHz (U11) nur in Innenräumen erlaubt.

Français-Attention: Dans les États membres de l'UE, les pays de l'AELE, l'Irlande du Nord et la Grande-Bretagne, l'utilisation dans la gamme de fréquences 5150MHz-5250MHz (U11) n'est autorisée qu'en intérieur.

Nederlands-Aandacht: In de EU-licdstaten, de EVA-landen, Noord-Ierland en Groot-Brittannië is gebruik in het 5150MHz-5250MHz (U11) frequentiebereik alleen binnenshuis toegestaan.

Čeština-Pozor: V členských státech EU, zemích ESVO, Severním Irsku a Velké Británii je provoz ve frekvenčním rozsahu 5150MHz-5250MHz (U11) povolen pouze v interiéru.

Română-Atenție: În statele membre UE, țările EFTA, Irlanda de Nord și Marea Britanie, operarea în intervalul de frecvență 5150MHz-5250MHz (U11) este permisă numai în interior.

Português-Atenção: Nos estados membros da UE, países da EFTA, Irlanda do Norte e Grã-Bretanha, o funcionamento na gama de frequências 5150MHz-5250MHz (U11) só é permitido no interior.

Svenska-Uppmärksamhet: I EU medlemsstater, EFTA-länderna, Nordirland och Storbritannien är det endast tillåtet att använda frekvensområdet 5150MHz-5250MHz (U11) inomhus.

Slovenščina-Pozor: V členskih državah EU, kraljinah EFTA, Severnem Irsku a Veliki Britaniji je predvzeto za uporabo v frekvenčnem pasmu 5150MHz-5250MHz (U11) dovoljena le v interieru.

Ελληνικά-Προσοχή: Στα κράτη μέλη της ΕΕ, στις χώρες της ΕΖΕΣ, στη Βόρεια Ιρλανδία και στη Μεγάλη Βρετανία, η λειτουργία στην περιοχή συχνότητας 5150MHz-5250MHz (U11) επιτρέπεται μόνο σε εσωτερικούς χώρους.

FCC Statement

This equipment has been tested and found to comply with the limits for a Class B digital device pursuant to Part 15 of the FCC Rules. These limits are designed to provide reasonable protection against harmful interference in a residential installation. This equipment generates, uses and can radiate radio frequency energy and, if not installed and used in accordance with the instructions, may cause harmful interference to radio communications. However, there is no guarantee that interference will not occur in a particular installation. If this equipment does cause harmful interference to radio or television reception, which can be determined by turning the equipment off and on, the user is encouraged to try to correct the interference by one or more of the following measures:

- Reorient or relocate the receiving antenna.
- Increase the separation between the equipment and receiver.
- Connect the equipment into an outlet on a circuit different from that to which the receiver is connected.
- Consult the dealer or an experienced radio/TV technician for help.

Operation is subject to the following two conditions: (1) This device may not cause harmful interference, and (2) this device must accept any interference received, including interference that may cause undesired operation.

Radiation Exposure Statement

This device complies with FCC radiation exposure limits set forth for an uncontrolled environment and it also complies with Part 15 of the FCC RF Rules. This device has been tested and complied with FCC Body SAR limits at 5mm distance.

Magyar-Figyelem: Az EU-tagállamokban, az EFTA-országokban, Észak-Írországból és Nagy-Britanniából az 5150MHz-5250MHz (U11) -es frekvenciatartományban való működetés csak beltérben engedélyezett.

Italiano-Attenzione: Negli Stati membri dell'UE, nei Paesi EFTA, nell'Irlanda del Nord e in Gran Bretagna, il funzionamento nella gamma di frequenze 5150MHz-5250MHz (U11) è consentito solo in ambienti chiusi.

Български-Внимание: В страните-членки на ЕС, страните от ЕАСТ, Северна Ирландия и Великобритания, работата в честотния диапазон 5150MHz-5250MHz (U11) е разрешена само на закрито.

Español-Atención: En los estados miembros de la UE, los países de la AELC, Irlanda del Norte y Gran Bretaña, el uso del rango de frecuencia operativa de 5150MHz-5250MHz (U11) solo está permitido en interiores.

Eesti-Tähelepanu: EL-õ liikmesriikides, EFTA riikides, Põhja-Iirimaal ja Suurbritannias on sagedusvahemikus 5150MHz-5250MHz (U11) kasutamise lubatud ainult siseruumides.

Dansk-Bemærk: I EU-medlemslandene, EFTA-landene, Nordirland og Storbritannien er drift i frekvensområdet 5150MHz-5250MHz (U11) kun tilladt indendørs.

Suomi-Huom: EU-maissa, EFTA-maissa sekä Isonsa-Britanniassa ja Pohjois-Irannissa taajuusalueella 5150MHz-5250MHz (U11) on sallittua käyttää ainoastaan sisätiloissa.

Hrvatski-Pozornost: U državama članicama EU, zemljama EFTA-e, Sjevernoj Irskoj i Velikoj Britaniji, rad u frekvencijskom rasponu od 5150MHz-5250MHz (U11) dopušten je samo u zatvorenom prostoru.

Latviešu-Uzmanību: ES valstīs, EBTA valstīs, Ziemeļīrijā un Lielbritānijā, operēšana iekšējās ir atļauta tikai 5150MHz-5250MHz (U11) diapazonā.

Lietuvių-Dėmesio: ES valstybėse narėse, ELPA šalyse, Šiaurės Airijoje ir Didžiojoje Britanijoje 5150MHz-5250MHz (U11) dažnių diapazone leidžiama veikti tik patalpose.

Slovenščina-Pozor: V državah članicah EU, državah EFTA, Severni Irski in Veliki Britaniji je delovanje v frekvenčnem območju 5150MHz-5250MHz (U11) dovoljeno samo v zaprtih prostorih.

Íslenska-Áthugið: Á áðildarríkjum ESB, EFTA-löndum, Norður-Írlandi og Bretlandi er rekstur á tönisvæðinu 5150MHz-5250MHz (U11) aðeins leyfður innanrynda.

Ελληνικά-OBS: ΕUs μεμλεσανδ, EFTA-λανδ, Nord-Ιrλανδ and Storbritannia ηr drift i frekven sområdet 5150MHz-5250MHz (U11) kun tillat innendørs.

Caution: Any changes or modifications not expressly approved by the party responsible for compliance could void the user's authority to operate this equipment. This transmitter must not be co-located or operating in conjunction with any other antenna or transmitter. Operating frequency: 2412MHz-2462MHz, U11: 5150MHz-5250MHz, 5725MHz-5850MHz

NOTE: (1) The manufacturer is not responsible for any radio or TV interference caused by unauthorized modifications to this equipment. (2) To avoid unnecessary radiation interference, it is recommended to use a shielded RJ45 cable.



RECYCLING

This product bears the selective sorting symbol for Waste electrical and electronic equipment (WEEE). This means that this product must be handled pursuant to European directive 2012/19/EU in order to be recycled or dismantled to minimize its impact on the environment. User has the choice to give his product to a competent recycling organization or to the retailer when he buys a new electrical or electronic equipment.

LA OPERACIÓN DE ESTE DISPOSITIVO ESTÁ SUJETA A LAS SIGUIENTES CONDICIONES:

- Es posible que este equipo o dispositivo no cause interferencia perjudicial.
 - Este equipo o dispositivo debe aceptar cualquier tipo de interferencia, incluyendo la que pueda causar su operación no deseada.
- Estimado usuario: Antes de utilizar este producto lo invitamos a leer el siguiente manual para que conozca todas sus funciones y características.

Producto	NOMBRE DEL PRODUCTO: Adaptador USB inalámbrico MODELO: U2, U11, W311M1
PAIS DE ORIGEN: CHINA	



Technical Support

Shenzhen Tenda Technology Co., Ltd.
Floor 6-8, Tower E3, No.1007, Zhongshanyuan Road, Nanshan District, Shenzhen, China. 518052
Website: www.tendacn.com
Support: support@tenda.com.cn
support.us@tenda.com (North America)
support.uk@tenda.com (United Kingdom)

Copyright © 2024 Shenzhen Tenda Technology Co., Ltd. All rights reserved. Tenda is a registered trademark legally held by Shenzhen Tenda Technology Co., Ltd. Other brand and product names mentioned herein are trademarks or registered trademarks of their respective holders. Specifications are subject to change without notice.