



**HESTORE.HU**

elektronikai alkatrész áruház

**EN:** This Datasheet is presented by the manufacturer.

Please visit our website for pricing and availability at [www.hestore.hu](http://www.hestore.hu).



<b>DATA SHEET</b>	53112610
<b>SKINTOP® MS-SC-M / MS-SC-M-XL</b>	valid from: 26.02.2016

The SKINTOP® MS-SC-M / MS-SC-M-XL is a nickel-plated brass cable gland especially designed for copper-screened cables and is used to achieve a low-resistance screen contact, strain relief and high protection class. The SKINTOP® MS-SC-M / MS-SC-M-XL is not qualified for cases twisting a gland after inserting the cable (e.g. circular connectors).



#### Components:

Gland body	Brass, nickel-plated
Cap nut	Brass, nickel-plated
Insert with lamellar cage	Polyamide, V2 acc. to UL94
Sealing ring	CR (ozone and UV- resistant)
Contact spring	CuBe, tin-plated
O-ring	NBR (ozone and UV- resistant)

#### Technical features:

Connecting thread	M12x1,5 up to M50x1,5 acc. to EN 60423
Protection class / NEMA Typ Rating	IP68 - 10 bar, test acc. to EN 60529 IP69 acc. to EN 60529 Typw 1, Type 4X, Type 6 and Type 12
Temperature range	Dynamic -25 °C up to +100 °C Statically -40 °C up to +100 °C
Transfer impedance	≤ 10 mOhm
Corrosion-protection class	C4

#### Approvals:



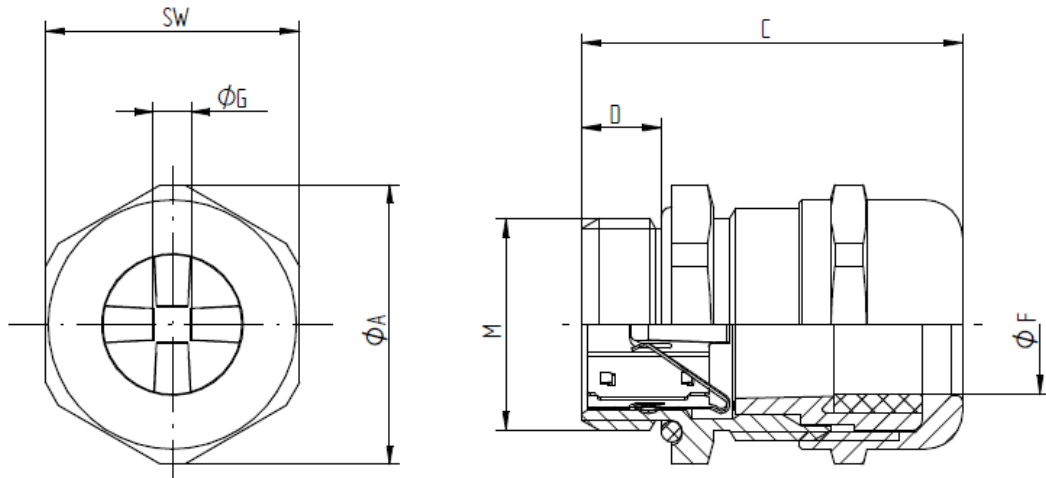
#### Norm references:



For more information please see our current catalogue.

elaborated by: PDP: M. Wegerer	Document: DB53112610_13EN	page 1 of 2
-----------------------------------	---------------------------	-------------

<b>DATA SHEET</b>	53112610
<b>SKINTOP® MS-SC-M / MS-SC-M-XL</b>	valid from: 26.02.2016



### SKINTOP® MS-SC-M

M	SW [mm]	Ø A [mm]	C max. [mm]	D [mm]	Ø F [mm] Clamping range	Ø G [mm]	O-Ring [mm]	Article No.
M12x1,5	16	17,6	26,5	6,5	3,5-7	1,0	9x2	53112610
M16x1,5	20	22,0	33,0	7,0	4,5-9	4,0	13x2	53112620
M20x1,5	24	26,4	37,0	8,5	7-13	5,0	17x2	53112630
M25x1,5	29	31,9	38,5	8,0	9-17	7,5	22x2	53112640
M32x1,5	36	39,6	45,5	9,0	11-21	9,0	28x2	53112650
M40x1,5	45	49,5	48,0	9,0	19-28	15,0	36x2	53112660
M50x1,5	54	59,0	55,5	10,0	27-35	21,0	46x2	53112670

### SKINTOP® MS-SC-M-XL

M	SW [mm]	Ø A [mm]	C max. [mm]	D [mm]	Ø F [mm] Clamping range	Ø G [mm]	O-Ring [mm]	Article No.
M12x1,5	16	17,6	32,0	12	3,5-7	1,0	9x2	53112615
M16x1,5	20	22,0	38,0	12	4,5-9	4,0	13x2	53112625
M20x1,5	24	26,4	41,0	12	7-13	5,0	17x2	53112635
M25x1,5	29	31,9	42,5	12	9-17	7,5	22x2	53112645
M32x1,5	36	39,6	51,5	15	11-21	9,0	28x2	53112655
M40x1,5	45	49,5	54,0	15	19-28	15,0	36x2	53112665
M50x1,5	54	59,0	60,5	15	27-35	21,0	46x2	53112675

**Recommended torque rates in acc. to EN 50262:**

Sizes	Torque [Nm]
M12x1,5	8
M16x1,5	10
M20x1,5 - M25x1,5	12
M32x1,5 - M40x1,5	18
M50x1,5	20