



**HESTORE.HU**

elektronikai alkatrész áruház

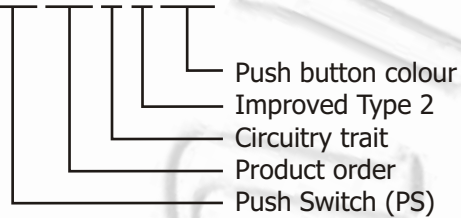
**EN:** This Datasheet is presented by the manufacturer.

Please visit our website for pricing and availability at [www.hestore.hu](http://www.hestore.hu).

## Specification:

- 1) Rating (if not described next to the switch):  
3 A 125 VAC; 1 A 250 VAC
- 2) Contact Resistance: 20 mΩ max.
- 3) Insulation Resistance: 500 VDC 100 MΩ min.
- 4) Dielectric strength: 1000 VAC, 1 minute
- 5) Electrical Life: 50000 cycles

## PS10B2BK



## CIRCUITRY TRAIT

A	ON - OFF	Push on/Push off	With lock
B	OFF - (ON)	Push on	Momentary
C	ON - (OFF)	Push off	Momentary

( ) indicates momentary

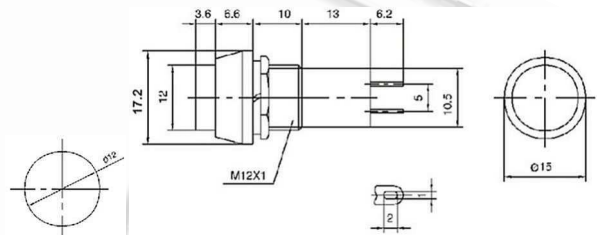
## PUSH BUTTON COLOUR

RD	red
GN	green
OR	orange
BU	blue
WH	white
BK	black
YL	yellow

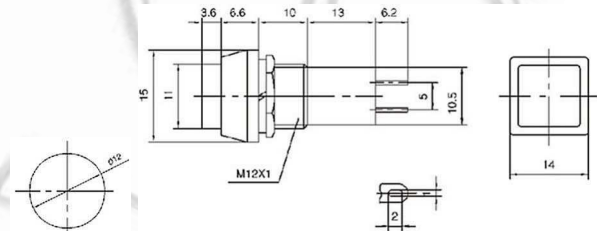
# Ninigi



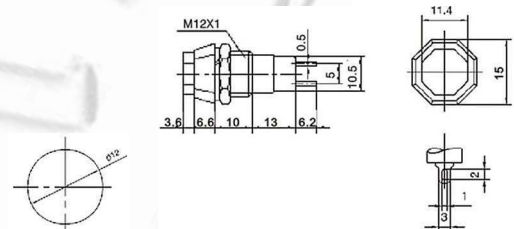
**PS11A** ON-OFF  
**PS11B** OFF-(ON)  
**PS11C** ON-(OFF)



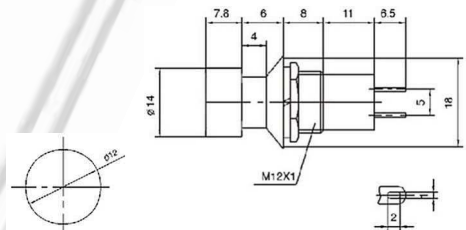
**PS12A** ON-OFF  
**PS12B** OFF-(ON)  
**PS12C** ON-(OFF)



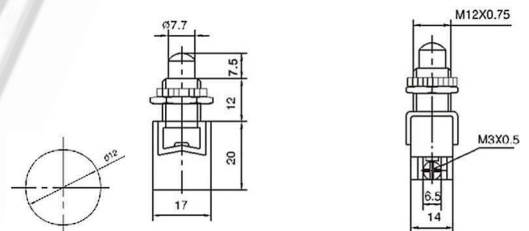
**PS14A** ON-OFF  
**PS14B** OFF-(ON)  
**PS14C** ON-(OFF)



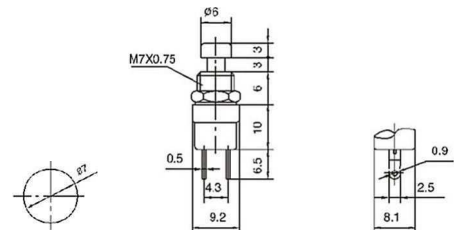
**PS16A** ON-OFF  
**PS16B** OFF-(ON)  
**PS16C** ON-(OFF)



**PS13B** OFF-(ON)  
**PS13C** ON-(OFF)  
 8 A 125 VAC; 4 A 250 VAC



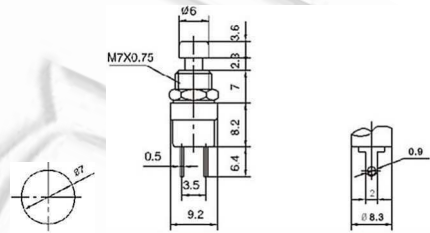
**PS10B** OFF-(ON)  
 (plastic rod)



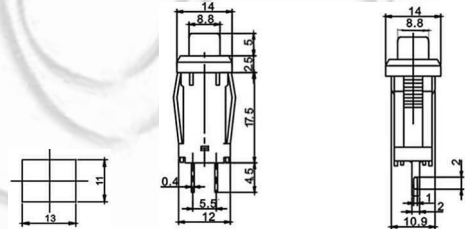
# Ninigi



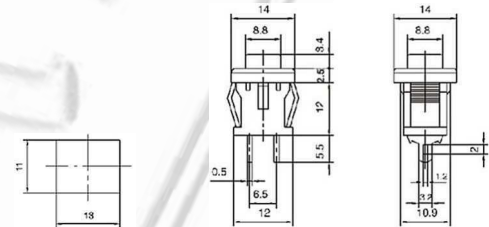
**PS10B2** OFF-(ON)  
**PS10C2** ON-(OFF)  
 (metal rod)



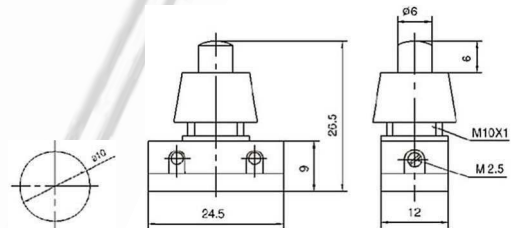
**PS15A** ON-OFF



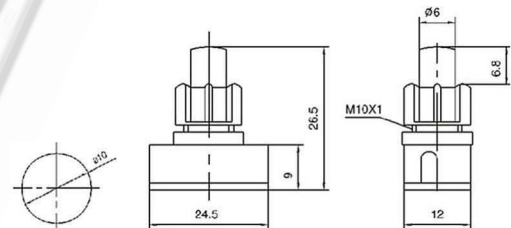
**PS15B** OFF-(ON)  
**PS15C** ON-(OFF)



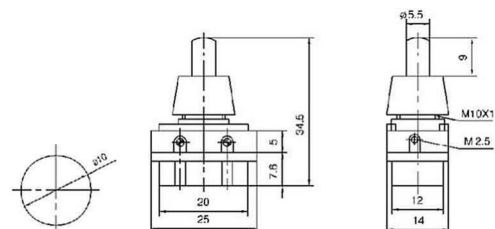
**PS17A** ON-OFF  
 4 A 125 VAC; 2 A 250 VAC



**PS17A2** ON-OFF  
 (PS17B)



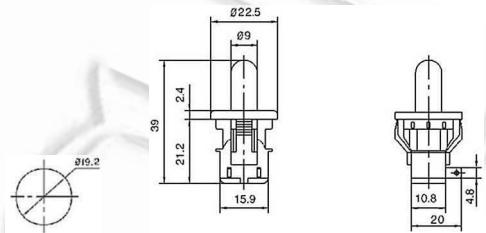
**PS17A3** ON-OFF  
 (PBS-17B)  
 4 A 125 VAC; 2 A 250 VAC



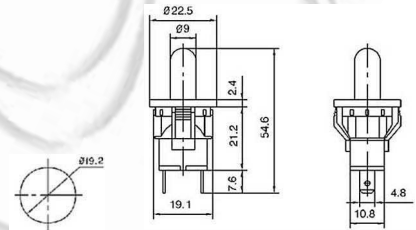
# Ninigi



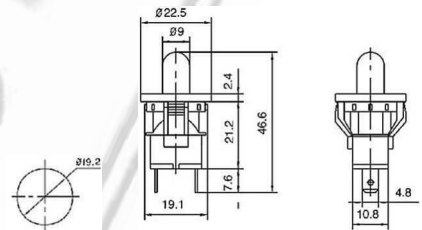
**PS19B** OFF-(ON)  
**PS19C** ON-(OFF)  
 5 A 125 VAC; 2.5 A 250 VAC



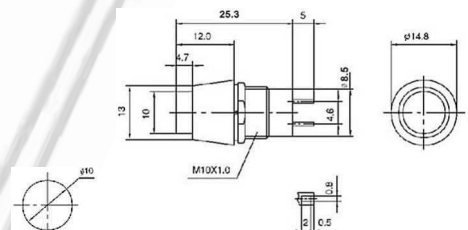
**PS19B2** OFF-(ON)  
**PS19C2** ON-(OFF)  
 5 A 125 VAC; 2.5 A 250 VAC



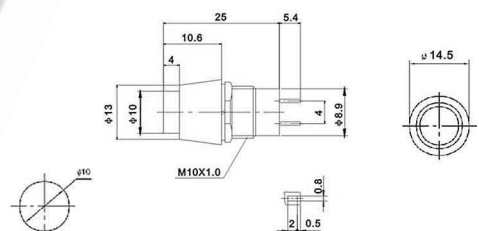
**PS19B3** OFF-(ON)  
**PS19C3** ON-(OFF)  
 5 A 125 VAC; 2.5 A 250 VAC



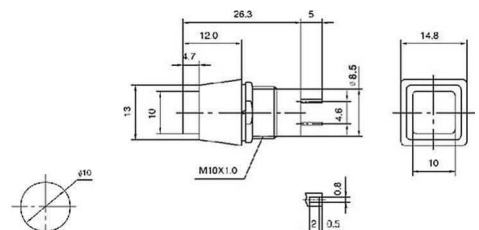
**PS20A** ON-OFF  
**PS20B** OFF-(ON)



**PS20A2** ON-OFF  
**PS20B2** OFF-(ON)



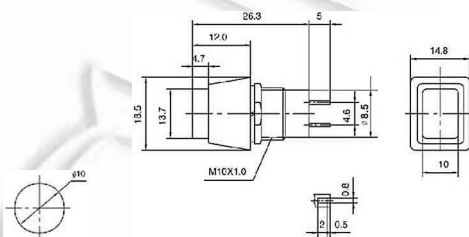
**PS21A** ON-OFF  
**PS21B** OFF-(ON)



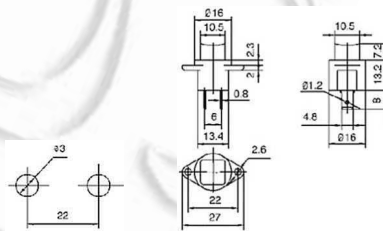
# Ninigi



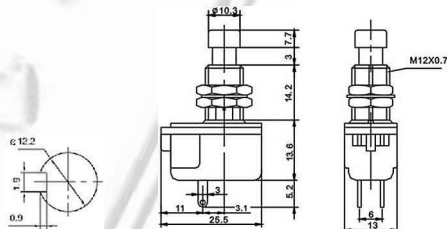
**PS22A** ON-OFF  
**PS22B** OFF-(ON)



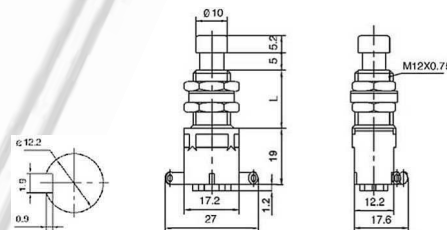
**PS23B** OFF-(ON)



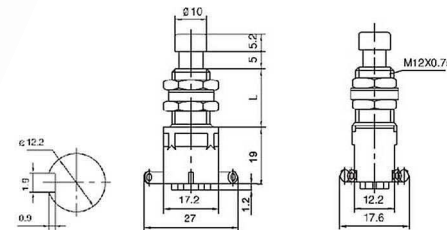
**PS24B2** OFF-(ON)  
**PS24C2** ON-(OFF)  
10 A 125 VAC; 2.5 A 250 VAC  
SPST 2P



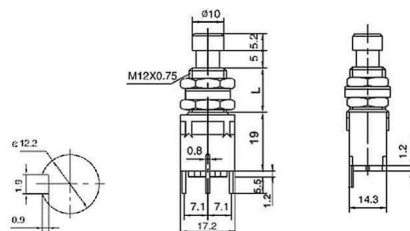
**PS24102** ON-ON  
**PS24112** ON-(ON)  
4 A 125 VAC; 2 A 250 VAC  
SPDT 3P  
(L=14.2, 11.8, 9.8)



**PS24202** ON-ON  
**PS24212** ON-(ON)  
4 A 125 VAC; 2 A 250 VAC  
DPDT 6P  
(L=14.2, 11.8, 9.8)



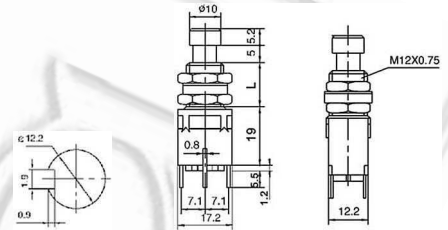
**PS24102P** ON-ON  
**PS24112P** ON-(ON)  
4 A 125 VAC; 2 A 250 VAC  
SPDT 3P  
(L=14.2, 11.8, 9.8)



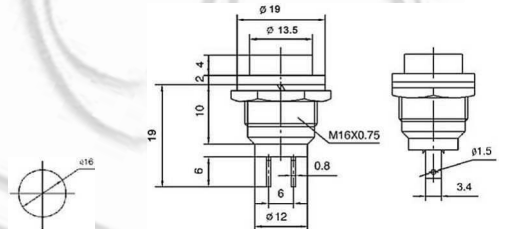
# Ninigi



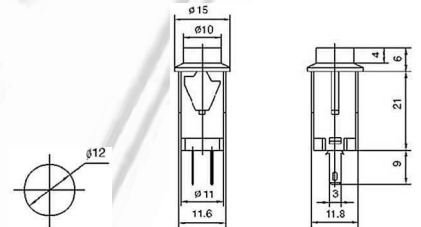
**PS24202P** ON-ON  
**PS24212P** ON-(ON)  
 4 A 125 VAC; 2 A 250 VAC  
 DPDT 6P  
 (L=14.2, 11.8, 9.8)



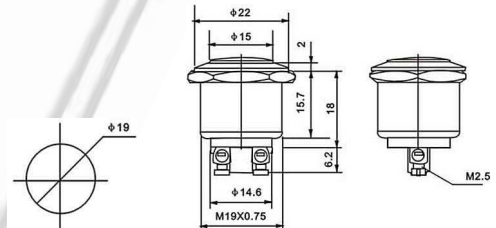
**PS26B** OFF-(ON)  
**PS26C** ON-(OFF)  
 4 A 125 VAC; 2 A 250 VAC



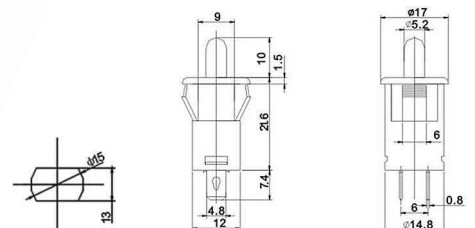
**PS27B** OFF-(ON)



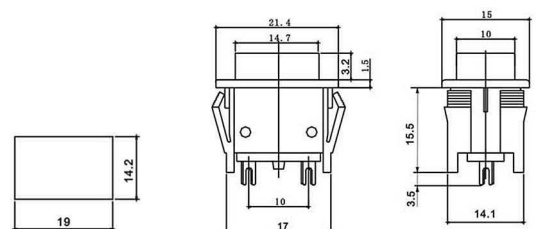
**PS28B** OFF-(ON)  
 4 A 125 VAC; 2 A 250 VAC



**PS29B** OFF-(ON)



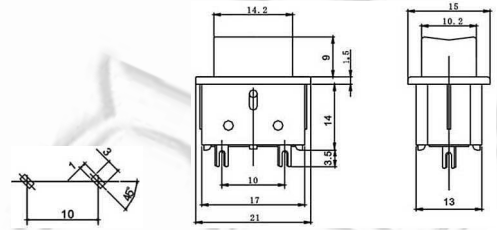
**PS30B** OFF-(ON)



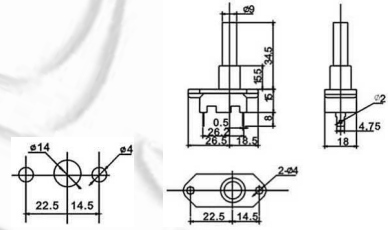
# Ninigi



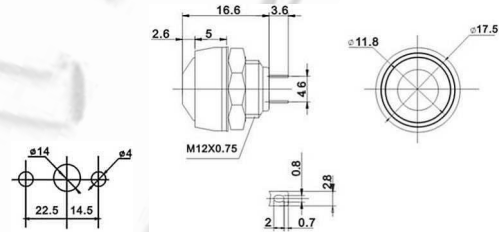
**PS31B** OFF-(ON)



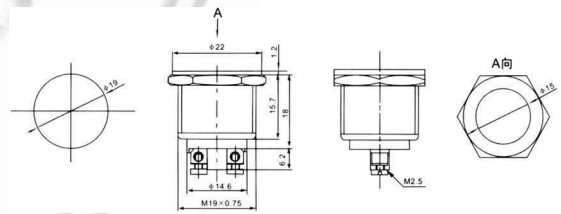
**PS32B** OFF-(ON)  
10 A 125 VAC; 6 A 250 VAC



**PS33B** OFF-(ON)



**PS28B-2** OFF-(ON)  
4 A 125 VAC; 2 A 250 VAC



**PS28B-3** OFF-(ON)  
4 A 125 VAC; 2 A 250 VAC

