



HESTORE.HU

elektronikai alkatrész áruház

EN: This Datasheet is presented by the manufacturer.

Please visit our website for pricing and availability at www.hestore.hu.



| Module | Socket | Relay | Description | Mounting | Accessories |
|--------|--------|-------|---|---|---|
| 99.02 | 90.02 | 60.12 | Screw terminal (Box clamp) socket Double A1 terminal | Panel or 35 mm rail (EN 60715) mount | - Coil indication and EMC suppression modules - Jumper link - Timer modules - Metal retaining clip |
| | 90.03 | 60.13 | | | |



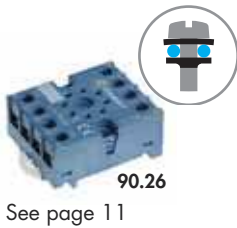
| Module | Socket | Relay | Description | Mounting | Accessories |
|--------|--------|-------|-----------------------------------|---|---|
| 99.01 | 90.20 | 60.12 | Screw terminal (Box clamp) socket | Panel or 35 mm rail (EN 60715) mount | - Coil indication and EMC suppression modules - Metal retaining clip |
| | 90.21 | 60.13 | | | |



| Module | Socket | Relay | Description | Mounting | Accessories |
|--------|---------|-------|-----------------------------------|---|------------------------|
| — | 90.82.3 | 60.12 | Screw terminal (Box clamp) socket | Panel or 35 mm rail (EN 60715) mount | - Metal retaining clip |
| — | 90.83.3 | 60.13 | | | |



| Module | Socket | Relay | Description | Mounting | Accessories |
|--------|--------|-------|-----------------------------------|---|------------------------|
| — | 90.22 | 60.12 | Screw terminal (Box clamp) socket | Panel or 35 mm rail (EN 60715) mount | - Metal retaining clip |
| — | 90.23 | 60.13 | | | |



| Module | Socket | Relay | Description | Mounting | Accessories |
|--------|--------|-------|-------------------------------------|---|------------------------|
| — | 90.26 | 60.12 | Screw terminal (Plate clamp) socket | Panel or 35 mm rail (EN 60715) mount | - Metal retaining clip |
| — | 90.27 | 60.13 | | | |



| Module | Socket | Relay | Description | Mounting | Accessories |
|--------|--------|-------|----------------------------|-----------------|-------------|
| — | 90.12 | 60.12 | Flange mount solder socket | M3 screw fixing | — |
| — | 90.13 | 60.13 | | | |



| Module | Socket | Relay | Description | Mounting | Accessories |
|--------|---------|-------|-------------|----------|-------------|
| — | 90.14 | 60.12 | PCB socket | PCB | — |
| — | 90.14.1 | 60.12 | | | |
| — | 90.15 | 60.13 | | | |
| — | 90.15.1 | 60.13 | | | |



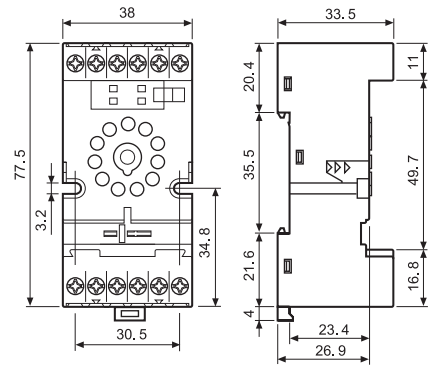
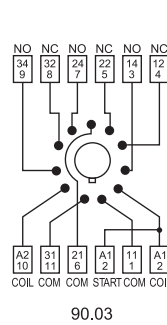
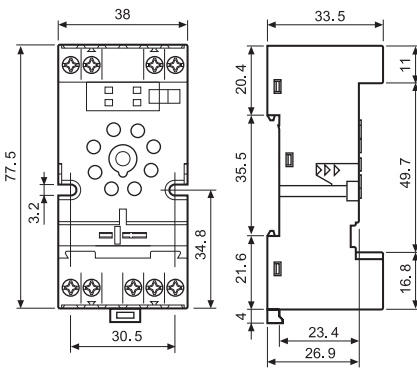
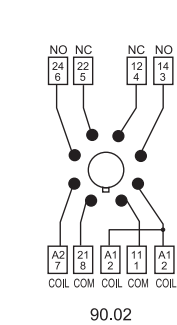
90.03

Approvals (according to type):



Certain relay/socket combinations

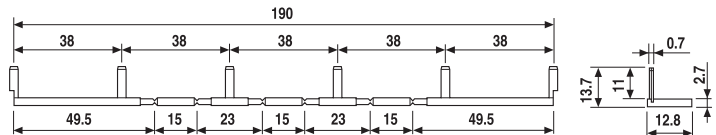
| Screw terminal (Box clamp) socket panel or 35 mm rail (EN 60715) mount For relay type | 90.02 Blue | 90.02.0 Black | 90.03 Blue | 90.03.0 Black |
|---|-----------------------------|------------------|---------------|------------------|
| Accessories | | | | |
| Metal retaining clip | | | 090.33 | |
| 6-way jumper link | | | 090.06 | |
| Identification tag | | | 090.00.2 | |
| Modules (see table below) | | | 99.02 | |
| Timer modules (see table below) | | | 86.00, 86.30 | |
| Technical data | | | | |
| Rated values | 10 A - 250 V | | | |
| Dielectric strength | 2 kV AC | | | |
| Protection category | IP 20 | | | |
| Ambient temperature | °C -40...+70 | | | |
| Screw torque | Nm 0.6 | | | |
| Wire strip length | mm 10 | | | |
| Max. wire size for 90.02 and 90.03 sockets | solid wire | | stranded wire | |
| | mm ² 1x6 / 2x2.5 | | 1x4 / 2x2.5 | |
| | AWG 1x10 / 2x14 | | 1x12 / 2x14 | |



090.06

| 6-way jumper link for 90.02 and 90.03 sockets | 090.06 (blue) |
|---|---------------|
| Rated values | 10 A - 250 V |

Approvals (according to type):



86.00



86.30

| 86 series timer modules | |
|---|------------------|
| Multi-voltage: (12...240)V AC/DC; | |
| Multi-functions: AI, DI, SW, BE, CE, DE, EE, FE; (0.05 s...100 h) | 86.00.0.240.0000 |
| (12...24)V AC/DC; Bi-function: AI, DI; (0.05 s...100 h) | 86.30.0.024.0000 |
| (110...125)V AC; Bi-function: AI, DI; (0.05s...100h) | 86.30.8.120.0000 |
| (230...240)V AC; Bi-function: AI, DI; (0.05 s...100 h) | 86.30.8.240.0000 |

Approvals (according to type):



99.02

Approvals (according to type):



| 99.02 coil indication and EMC suppression modules for 90.02 and 90.03 sockets | | |
|---|--------------------|----------------|
| Diode (+A1, standard polarity) | (6...220)V DC | 99.02.3.000.00 |
| LED | (6...24)V DC/AC | 99.02.0.024.59 |
| LED | (28...60)V DC/AC | 99.02.0.060.59 |
| LED | (110...240)V DC/AC | 99.02.0.230.59 |
| LED + Diode (+A1, standard polarity) | (6...24)V DC | 99.02.9.024.99 |
| LED + Diode (+A1, standard polarity) | (28...60)V DC | 99.02.9.060.99 |
| LED + Diode (+A1, standard polarity) | (110...220)V DC | 99.02.9.220.99 |
| LED + Varistor | (6...24)V DC/AC | 99.02.0.024.98 |
| LED + Varistor | (28...60)V DC/AC | 99.02.0.060.98 |
| LED + Varistor | (110...240)V DC/AC | 99.02.0.230.98 |
| RC circuit | (6...24)V DC/AC | 99.02.0.024.09 |
| RC circuit | (28...60)V DC/AC | 99.02.0.060.09 |
| RC circuit | (110...240)V DC/AC | 99.02.0.230.09 |
| Residual current by-pass | (110...240)V AC | 99.02.8.230.07 |

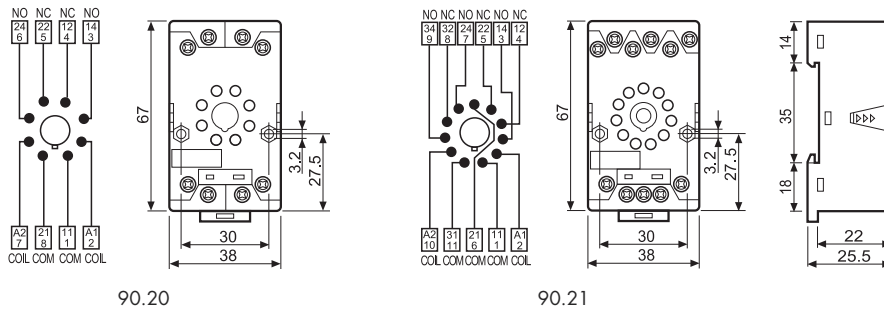
DC Modules with non-standard polarity (+A2) on request.



Approvals
(according to type):



| | | | | |
|--|-----------------------------|--------------------------------|-----------------------------|--------------------------------|
| Screw terminal (Box clamp) socket panel or 35 mm rail (EN 60715) mount | 90.20 Blue | 90.20.0 Black | 90.21 Blue | 90.21.0 Black |
| For relay type | 60.12 | | 60.13 | |
| Accessories | | | | |
| Metal retaining clip (supplied with socket - packaging code SMA) | | | 090.33 | |
| Modules (see table below) | | | 99.01 | |
| Technical data | | | | |
| Rated values | 10 A - 250 V | | | |
| Dielectric strength | 2 kV AC | | | |
| Protection category | IP 20 | | | |
| Ambient temperature | °C -40...+70 | | | |
| ⊕ Screw torque | Nm | 0.5 | | |
| Wire strip length | mm | 10 | | |
| Max. wire size for 90.20 and 90.21 sockets | | solid wire | stranded wire | |
| | mm ² | 1x6 / 2x2.5 | | 1x6 / 2x2.5 |
| | AWG | 1x10 / 2x14 | | 1x10 / 2x14 |



99.01

Approvals
(according to type):



* Modules in Black housing are available on request.

Green LED is standard.
Red LED available on request.

| 99.01 coil indication and EMC suppression modules for 90.20 and 90.21 sockets | | Blue* |
|---|--------------------|----------------|
| Diode (+A1, standard polarity) | (6...220)V DC | 99.01.3.000.00 |
| Diode (+A2, non-standard polarity) | (6...220)V DC | 99.01.2.000.00 |
| LED | (6...24)V DC/AC | 99.01.0.024.59 |
| LED | (28...60)V DC/AC | 99.01.0.060.59 |
| LED | (110...240)V DC/AC | 99.01.0.230.59 |
| LED + Diode (+A1, standard polarity) | (6...24)V DC | 99.01.9.024.99 |
| LED + Diode (+A1, standard polarity) | (28...60)V DC | 99.01.9.060.99 |
| LED + Diode (+A1, standard polarity) | (110...220)V DC | 99.01.9.220.99 |
| LED + Diode (+A2, non-standard polarity) | (6...24)V DC | 99.01.9.024.79 |
| LED + Diode (+A2, non-standard polarity) | (28...60)V DC | 99.01.9.060.79 |
| LED + Diode (+A2, non-standard polarity) | (110...220)V DC | 99.01.9.220.79 |
| LED + Varistor | (6...24)V DC/AC | 99.01.0.024.98 |
| LED + Varistor | (28...60)V DC/AC | 99.01.0.060.98 |
| LED + Varistor | (110...240)V DC/AC | 99.01.0.230.98 |
| RC circuit | (6...24)V DC/AC | 99.01.0.024.09 |
| RC circuit | (28...60)V DC/AC | 99.01.0.060.09 |
| RC circuit | (110...240)V DC/AC | 99.01.0.230.09 |
| Residual current by-pass | (110...240)V AC | 99.01.8.230.07 |

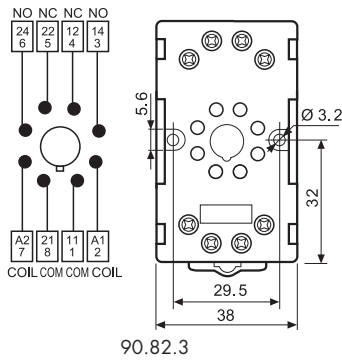


90.83.3

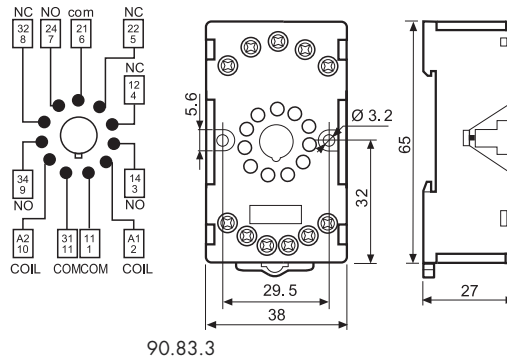
Approvals
(according to type):



| Screw terminal (Box clamp) socket panel or 35 mm rail (EN 60715) mount | 90.82.3 Blue | 90.82.30 Black | 90.83.3 Blue | 90.83.30 Black |
|---|---------------------------|-------------------|-----------------|-------------------|
| For relay type | 60.12 | | 60.13 | |
| Accessories | | | | |
| Metal retaining clip | 090.33 | | | |
| Technical data | | | | |
| Rated values | 10 A - 250 V | | | |
| Dielectric strength | 2 kV AC | | | |
| Protection category | IP 20 | | | |
| Ambient temperature | °C -40...+70 | | | |
| ⊕ Screw torque | Nm 0.8 | | | |
| Max. wire size for 90.82.3 and 90.83.3 sockets | solid wire | | stranded wire | |
| | mm ² 1x6 / 2x4 | | 1x6 / 2x4 | |
| | AWG 1x10 / 2x14 | | 1x10 / 2x14 | |



90.82.3



90.83.3

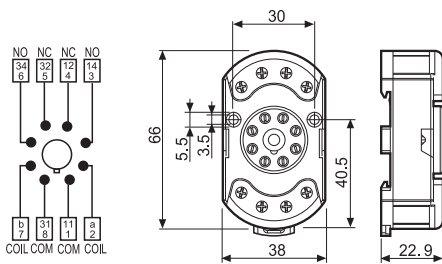


90.23

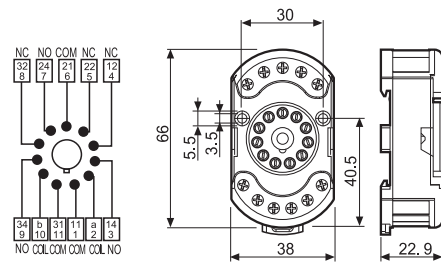
Approvals
(according to type):



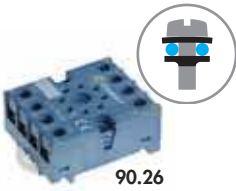
| Screw (Box clamp) terminal socket panel or 35 mm rail (EN 60715) mount | 90.22 Blue | 90.23 Blue |
|---|-----------------------------|---------------|
| For relay type | 60.12 | |
| Accessories | | |
| Metal retaining clip (supplied with socket - packaging code SMA) | 090.33 | |
| Technical data | | |
| Rated values | 10 A - 250 V | |
| Dielectric strength | 2 kV AC | |
| Protection category | IP 20 | |
| Ambient temperature | °C -40...+70 | |
| ⊕ Screw torque | Nm 0.5 | |
| Wire strip length | mm 7 | |
| Max wire size for 90.22 and 90.23 sockets | solid wire | |
| | mm ² 1x6 / 2x2.5 | |
| | AWG 1x10 / 2x14 | |



90.22



90.23

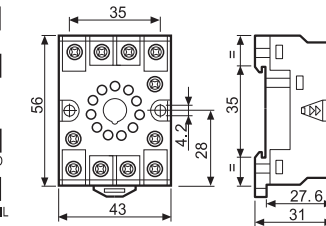
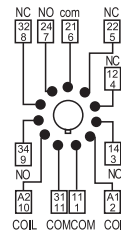
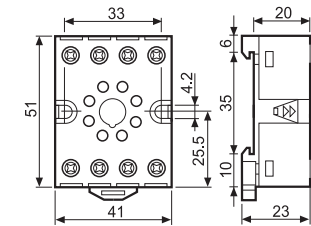


90.26

Approvals
(according to type):



| Screw terminal (Plate clamp) socket | 90.26 | 90.26.0 | 90.27 | 90.27.0 |
|--|-----------------|-------------|---------------|-------------|
| panel or 35 mm rail (EN 60715) mount | Blue | Black | Blue | Black |
| For relay type | 60.12 | | 60.13 | |
| Accessories | | | | |
| Metal retaining clip (supplied with socket - packaging code SMA) | | | | 090.33 |
| Technical data | | | | |
| Rated values | 10 A - 250 V | | | |
| Dielectric strength | 2 kV AC | | | |
| Protection category | IP 20 | | | |
| Ambient temperature | °C -40...+70 | | | |
| ⊕ Screw torque | Nm | 0.8 | | |
| Wire strip length | mm | 10 | | |
| Max. wire size for 90.26 and 90.27 sockets | solid wire | | stranded wire | |
| | mm ² | 1x4 / 2x2.5 | | 1x4 / 2x2.5 |
| | AWG | 1x12 / 2x14 | | 1x12 / 2x14 |

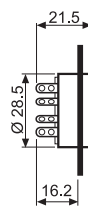
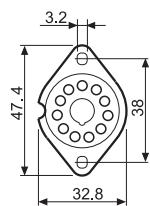
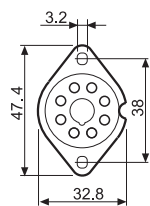


90.12

Approvals
(according to type):



| Flange mount solder socket | 90.12 (black) | 90.13 (black) |
|----------------------------|---------------|---------------|
| mount with M3 screw | 60.12 | 60.13 |
| Technical data | | |
| Rated values | 10 A - 250 V | |
| Dielectric strength | 2 kV AC | |
| Ambient temperature | °C -40...+70 | |



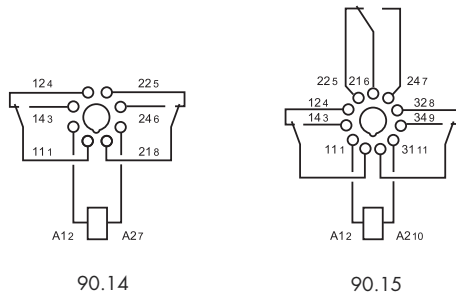
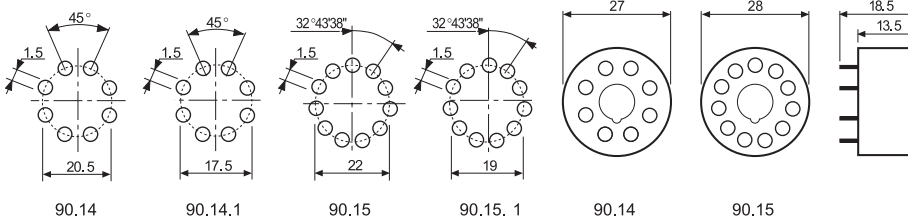


90.15

Approvals
(according to type):



| | | | |
|-----------------------|------|---------------------|-------------------|
| PCB socket | Blue | 90.14 (Ø 20.5 mm) | 90.15 (Ø 22 mm) |
| | Blue | 90.14.1 (Ø 17.5 mm) | 90.15.1 (Ø 19 mm) |
| For relay type | | 60.12 | 60.13 |
| Technical data | | | |
| Rated values | | 10 A - 250 V | |
| Dielectric strength | | 2 kV AC | |
| Ambient temperature | °C | -40...+70 | |



Packaging code

How to code and identify retaining clip and packaging options for sockets.

Example:

9 0 . 2 1 S M A

A Standard packaging

SM Metal retaining clip

9 0 . 2 1 [] []

Without retaining clip