



HESTORE.HU

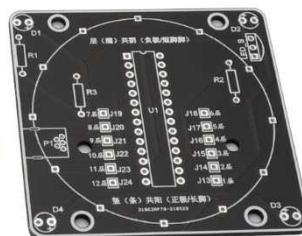
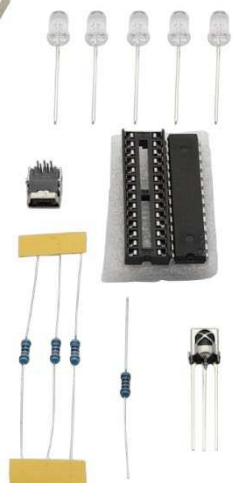
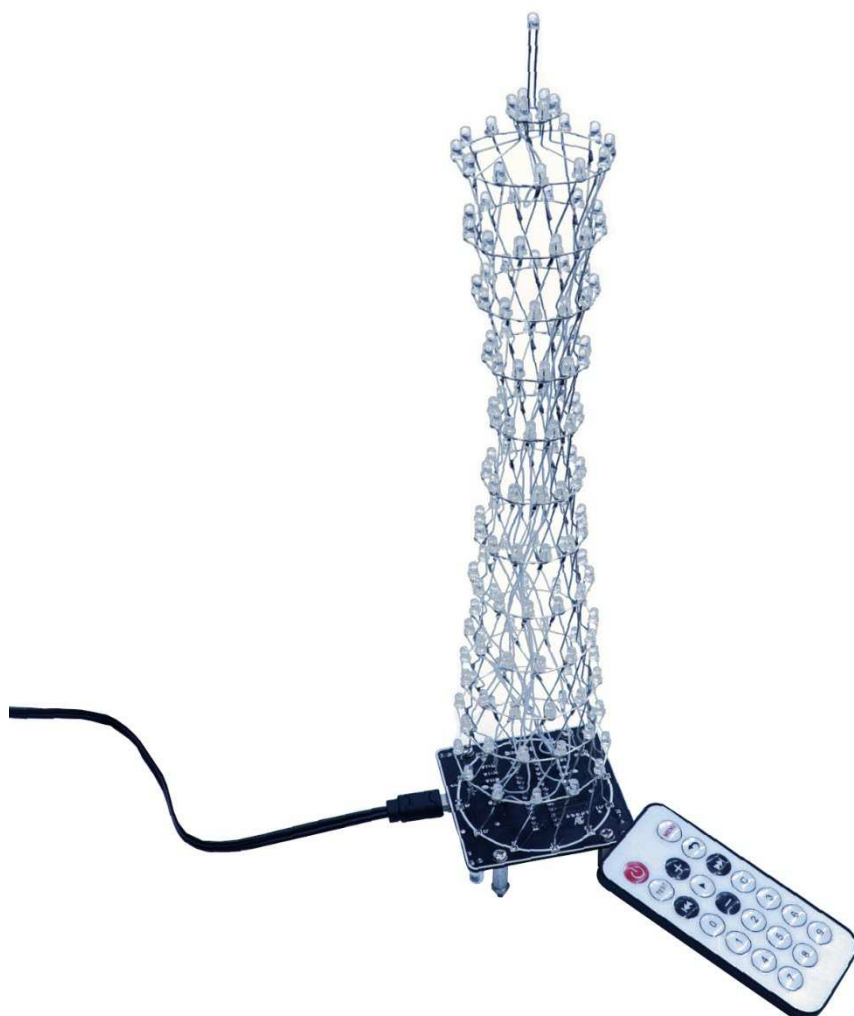
elektronikai alkatrész áruház

EN: This Datasheet is presented by the manufacturer.

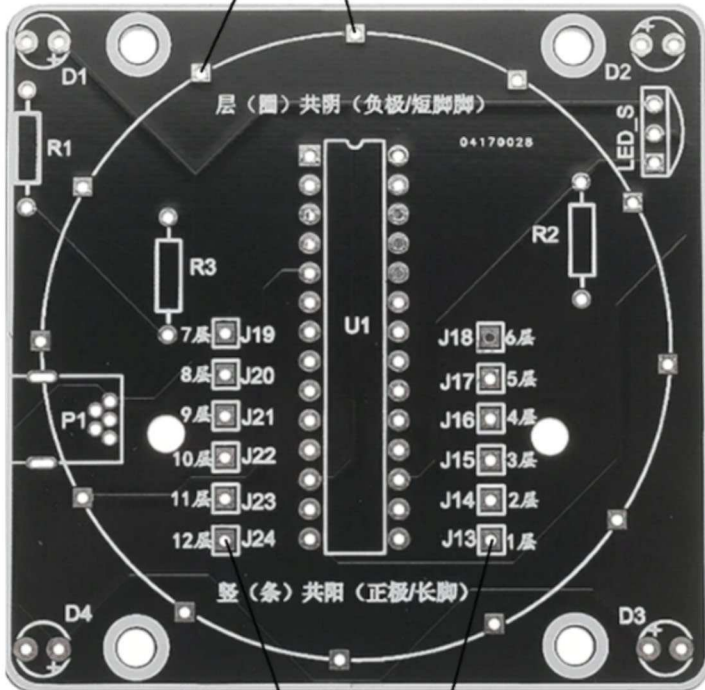
Please visit our website for pricing and availability at www.hestore.hu.

Canton Tower assembly instructions

Összeszerelési útmutató



Cathodes J1...J12



D1...D4: 5mm LED
R1: 1k
R2 R3: 100k
LED_S: 1838 IR
U1: STC15W408AS
P1: Mini USB
connector

Common anode rings J13...J24 / Floor 1-12

The following steps illustrate a possible assembly method:

A következő lépések egy lehetséges összeszerelési módszert ábrázolnak:

