



**HESTORE.HU**

elektronikai alkatrész áruház

**EN:** This Datasheet is presented by the manufacturer.

Please visit our website for pricing and availability at [www.hestore.hu](http://www.hestore.hu).

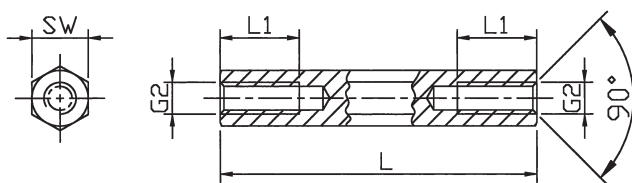
# spacer bolt

[ Brass, metric thread ]



## Standard range - spacer bolts [ Brass, nickel plated ]

**EXECUTION DII** [ Internal / internal thread ]



**Thread lengths** [ mm ]

L	L1 at M2.5 to M6	L1 at M2
5	5	5
6	6	6
8	8	8
10	10	10
12	12	6
15	15	6
18	9	6
from 20	10	6

Order No.	Execution	Material	SW* (hexagon)	Thread	Standard lengths in mm
111 x (length)	DII	Brass	SW4	M2	5, 6, 8, 10, 12, 15, 18, 20, 25, 30, 35, 40, 45, 50
1112 x	DII	Brass	SW4	M2.5	5, 6, 8, 10, 12, 15, 18, 20, 25, 30, 35, 40, 45, 50
112 x	DII	Brass	SW5	M2.5	5, 6, 8, 10, 12, 15, 18, 20, 25, 30, 35, 40, 45, 50, 55, 60
113 x	DII	Brass	SW5	M3	5, 6, 8, 10, 12, 15, 18, 20, 25, 30, 35, 40, 45, 50, 55, 60
114 x	DII	Brass	SW5.5	M3	5, 6, 8, 10, 12, 15, 18, 20, 25, 30, 35, 40, 45, 50, 55, 60, 65, 70
116 x	DII	Brass	SW7	M4	5, 6, 8, 10, 12, 15, 18, 20, 25, 30, 35, 40, 45, 50, 55, 60, 65, 70, 75, 80, 85, 90, 95, 100
118 x	DII	Brass	SW8	M5	8, 10, 12, 15, 18, 20, 25, 30, 35, 40, 45, 50, 55, 60, 65, 70, 75, 80, 85, 90, 95, 100
119 x	DII	Brass	SW10	M6	10, 12, 15, 18, 20, 25, 30, 35, 40, 45, 50, 55, 60, 65, 70, 75, 80, 85, 90, 95, 100

\*SW: width across flats

**Ordering example:** 111 x 10 = DII / Ms / SW4 / M2 x 10