

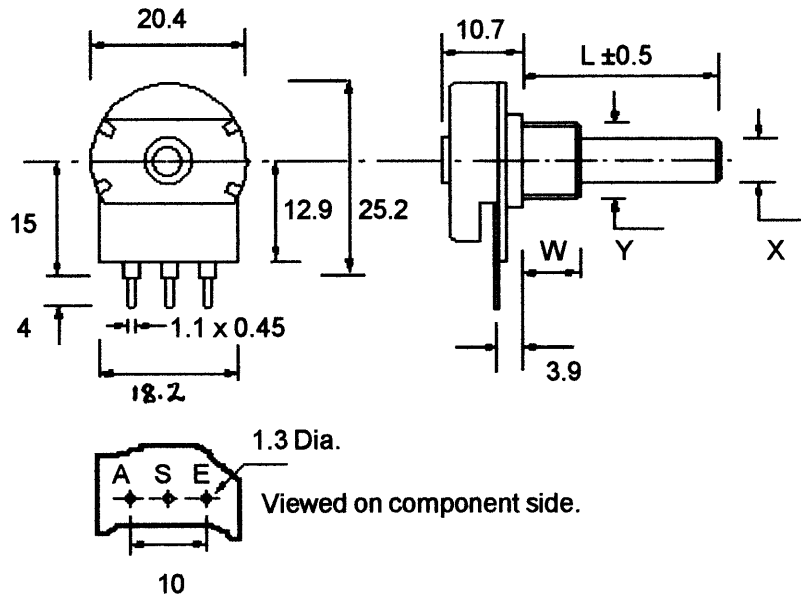
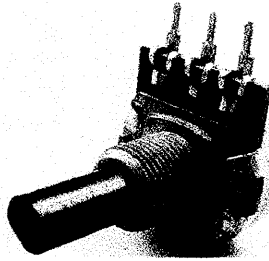


HESTORE.HU

elektronikai alkatrész áruház

EN: This Datasheet is presented by the manufacturer.

Please visit our website for pricing and availability at www.hestore.hu.



SPINDLE VARIATIONS *		BUSH VARIATIONS †		
Type	X (mm)	Y (mm)	W (mm)	Type
Plastic Fixed	6	M10 x 0.75	7	CP
Plastic Fixed	6	M10 x 0.75	10	CP
Plastic Fixed	6	M10 x 0.75	9	C or CEBS
Plastic Fixed	6	9.52 x 32 tpi	8	CBS
Plastic or Metal Fixed	4	M7 x 0.75	6	CG
Plastic Fixed	6.35	9.52 x 32 tpi	8	CBS or CBSL
Plastic Fixed	6.35	9.52 x 32 tpi	12	CBS or CBSL

Flatted spindles are available.

*See P20 Potentiometer 'SPINDLE DATA' leaflets for more information.

† See P20 Potentiometer 'BUSH DATA' leaflet for more information.

Mechanical and Electrical Specification - see separate leaflet.

TO ORDER see over.

This information is supplied in good faith but the customer is politely reminded that it is their responsibility to check the suitability of our products for their particular application. Please note that all dimensions are for reference purposes only and, as it is the Company's policy to continuously improve our products, we reserve the right to incorporate changes without notice.

Omeg Ltd.
 Imberhome Industrial Estate
 East Grinstead
 West Sussex RH19 1RJ
 ENGLAND
 Tel. +44 (0) 1342 410420 Fax. +44 (0) 1342 316253
 E-mail omeg.sales@omeg.co.uk
<http://www.omeg.co.uk>



P20 POTENTIOMETER MECHANICAL & ELECTRICAL DATA

MECHANICAL DATA

Rotation angle ϕ_N	300° \pm 5°
Operating Torque	0.4 - 1.5 Ncm
Permissible Torque at End Stop	80 Ncm
Permissible Axial Spindle Load	100 N (5 Sec. maximum)

ELECTRICAL DATA

Effective Electrical Rotation ϕ_E	
• Without switch	267° nominal.
• With switch	232° nominal.
Rated dissipation (maximum†) @ 40°C	0.4 W linear law
†See Power Dissipating Curve.	0.2 W non linear law
Element Voltage (maximum‡)	500V DC
‡See Working Voltage Curve.	
Insulation Resistance	\geq 4 Gohms
Insulation Voltage	1000 V AC
Rated Resistance	E3 Series
• Optional - E6 Series	
• Linear Law	1K - 1M
• Non linear Law	4K7 - 470K
Tolerance on Rated Resistance	\pm 20%
• Optional 1K - 1M	\pm 10%
Resistance Law	
• Linear	A
• Non linear	B or C
See Law Curves leaflets for more information.	
Note. Other laws by consultation.	
Operating temperature	-25° C to +70° C (See Temperature Derating Curve)
Temperature Coefficient of Resistance	+300 -500 ppm
Life	>20,000 cycles
Linearity	\pm 4% (See Independent Linearity leaflet)
Matching Tolerance (Tandem Stereo Potentiometers)	
• Law A	4 dB at Attenuation range 0 - 20 dB.
• Law B & C	3 dB at Attenuation range 0 - 20 dB.
See Matching Tolerance leaflet for more information.	

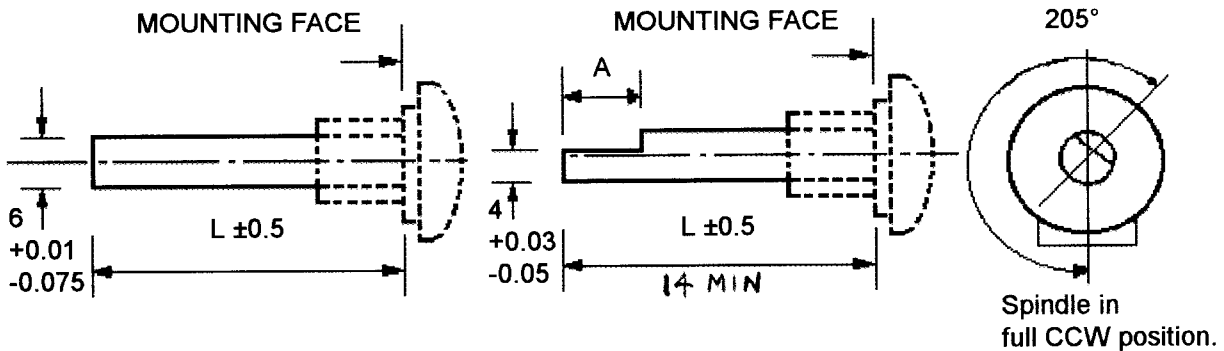
CLICK STOP POTENTIOMETERS

Centre indent, 11 & 21 positions available on certain models. Please enquire.

This information is supplied in good faith but the customer is politely reminded that it is their responsibility to check the suitability of our products for their particular application. Please note that all dimensions are for reference purposes only and, as it is the Company's policy to continuously improve our products, we reserve the right to incorporate changes without notice.

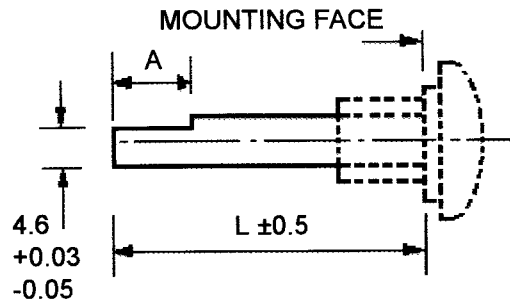
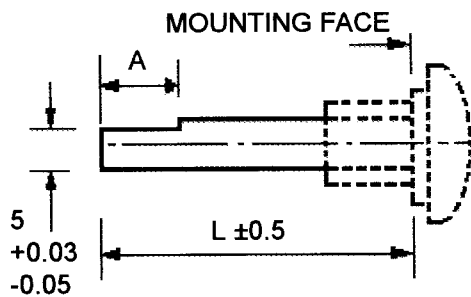
Omeg Ltd.
Imberhorne Industrial Estate
East Grinstead
West Sussex RH19 1RJ
ENGLAND
Tel. +44 (0) 1342 410420 Fax. +44 (0) 1342 316253
E-mail omeg.sales@omeg.co.uk
<http://www.omeg.co.uk>

6 mm Diameter Plastic Spindles



TYPE	DESC	L (mm)
F1	Plastic Fixed	15 to 65

TYPE	DESC.	L (mm)	A (mm)
F2	Plastic Fixed	15 to 65	12



TYPE	DESC	L (mm)	A (mm)
F3	Plastic Fixed	15 to 65	15
F4	Plastic Fixed	15 to 20	10

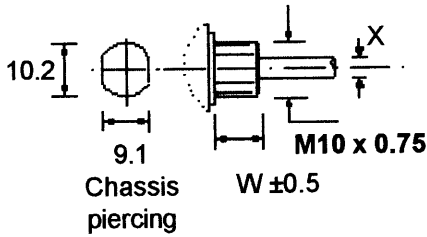
TYPE	DESC	L (mm)	A (mm)
F11	Plastic Fixed	15 to 60	15

REMOVABLE SPINDLES, similar in specification to 'fixed' spindles are supplied separate from the potentiometer. These can be indefinitely taken in and out. Holding strength >1Kg.

This information is supplied in good faith but the customer is politely reminded that it is their responsibility to check the suitability of our products for their particular application. Please note that all dimensions are for reference purposes only and, as it is the Company's policy to continuously improve our products, we reserve the right to incorporate changes without notice.

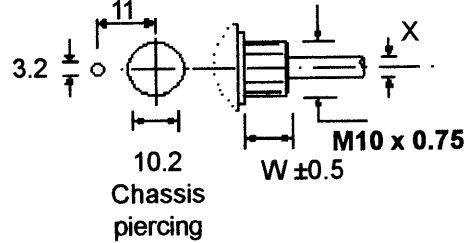
Omeg Ltd.
 Imberhorne Industrial Estate
 East Grinstead
 West Sussex RH19 1RJ
 ENGLAND
 Tel. +44 (0) 1342 410420 Fax. +44 (0) 1342 316253
 E-mail omeg.sales@omeg.co.uk
<http://www.omeg.co.uk>

DIECAST ZINC ALLOY



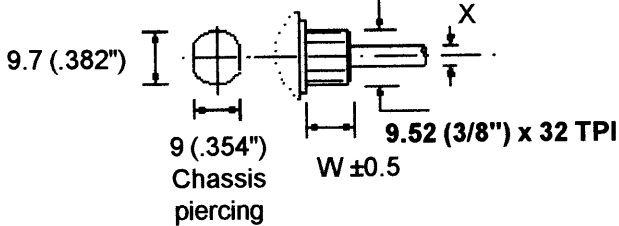
Type C (without locator)	
X (mm)	6
W (mm)	9

DIECAST ZINC ALLOY



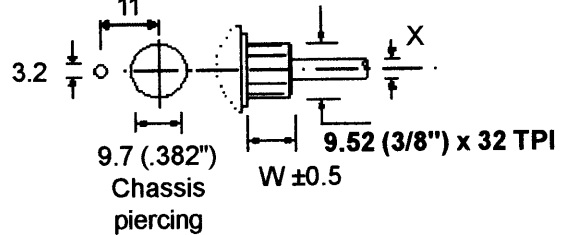
Type CEBS (with locator)	
X (mm)	6
W (mm)	9

DIECAST ZINC ALLOY



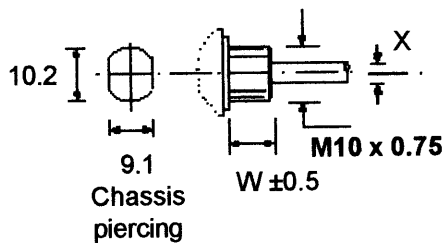
Type CBS (without locator)			
X (mm)	6	6.35	6.35
W (mm)	8	8	12

DIECAST ZINC ALLOY



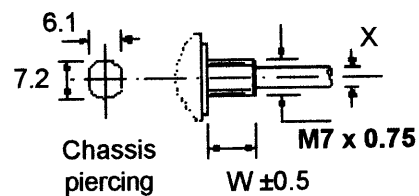
Type CBSL (with locator)		
X (mm)	6.35	6.35
W (mm)	8	12

GLASS FILLED NYLON



Type CP (GFN)			
X (mm)	6	6	6.35
W (mm)	7	10	7 or 10

DIECAST ZINC ALLOY



Type CG (without locator)	
X (mm)	4
W (mm)	6

This information is supplied in good faith but the customer is politely reminded that it is their responsibility to check the suitability of our products for their particular application. Please note that all dimensions are for reference purposes only and, as it is the Company's policy to continuously improve our products, we reserve the right to incorporate changes without notice.

Omeg Ltd.
 Imberhorne Industrial Estate
 East Grinstead
 West Sussex RH19 1RJ
 ENGLAND
 Tel. +44 (0) 1342 410420 Fax. +44 (0) 1342 316253
 E-mail omeg.sales@omeg.co.uk
<http://www.omeg.co.uk>