



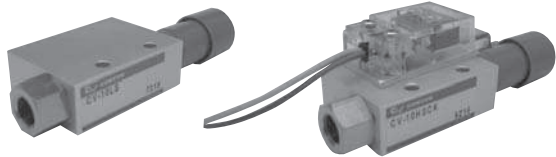
HESTORE.HU

elektronikai alkatrész áruház

EN: This Datasheet is presented by the manufacturer.

Please visit our website for pricing and availability at www.hestore.hu.

Standard vacuum ejector CV CONVUM



- Long life circle

No moving parts, simple construction

- Several sizes

Several nozzle sizes, from low to high vacuum flow

How to order

CV - ① 05 ② H ③ S ④ CK ⑤ G

① Nozzle diameter	
05	φ0.5
10	φ1.0
15	φ1.5
20	φ2.0
25	φ2.5
30A	φ3.0

② Max. vacuum pressure	
H	- 87 kPa
L	- 53 kPa

⑤ Port thread	
N	N (NPS)
G	G (BSPP)
Blank	Rc (BSPP)

④ Vacuum switch	
CK	piston micro-switch
Blank	without switch

③ Nominal pressure	
S	0.5MPa
R	0.35MPa

Note: Vacuum switch is not mountable with nozzle diameter 2.5 and 3.0

Note : ①②③④ applicable models

①	②	③		④
		S	R	
05	H	○	x	○
	L	○	x	○
10	H	○	○	○
	L	○	x	○
15	H	○	○	○
	L	○	x	○
20	H	○	○	○
	L	○	x	○
25	H	○	x	x
	L	○	x	x
30A	H	○	x	x
	L	○	x	x

Maintenance parts

- Silencer

MSS-01	CV-05, CV-10
MSM-01	CV-15
MSL-02	CV-20
MS6-01	CV-25, CV-30A

Note) Consult P412 for details

- Pressure switch: CV-CK

Note) Consult P76 for details

Specifications

Description	Unit	CV-05		CV-10			CV-15			CV-20			CV-25		CV-30A	
		HS	LS	HS	LS	HR	HS	LS	HR	HS	LS	HR	HS	LS	HS	LS
Fluid		Non-lubricated air / non-corrosive gas														
Ambient temperature	°C	0 ~ 60 without freezing														
Operating pressure range	MPa	0.1 ~ 0.6														
Nozzle size	φmm	0.5		1.0			1.5			2.0			2.5		3.0	
Nominal pressure	MPa	0.5		0.5	0.35		0.5	0.35		0.5	0.35		0.5		0.5	
Vacuum (air) flow	ℓ /min(ANR)	6	9	27	36	25	63	95	54	110	165	88	160	250	225	350
Max. vacuum pressure	kPa	-87	-57	-92	-57	-91	-92	-57	-91	-92	-57	-91	-92	-57	-92	-57
Air consumption	ℓ /min(ANR)	13		44			100			180			265		385	
Mass	without switch	80		80			140			350			730		870	
	with switch	120		120			190			460			-		-	