



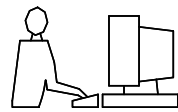
HESTORE.HU

elektronikai alkatrész áruház

EN: This Datasheet is presented by the manufacturer.

Please visit our website for pricing and availability at www.hestore.hu.

THIS IS A C.A.D. GENERATED DRAWING
DO NOT MAKE MANUAL REVISIONS TO MASTER.



* UNLESS OTHERWISE SPECIFIED TOLERANCES
ON DECIMAL IS: ANGLE $\pm 2'$

UNIT: MM

.xx ± 0.25
.xxx ± 0.13

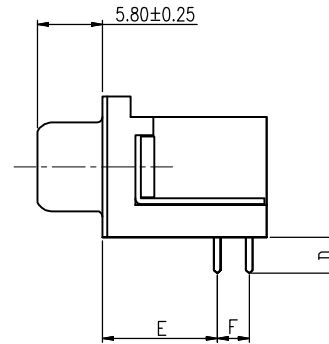
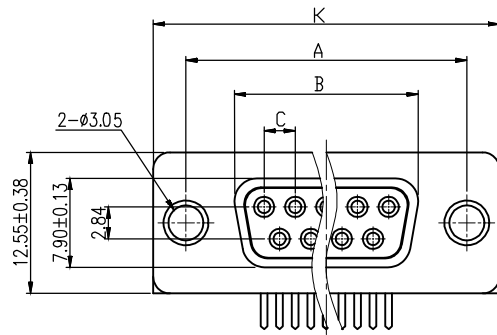
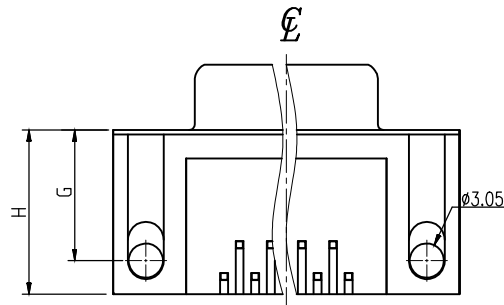


TABLE 1

| Size | Mating Force(Kgf) Max | Unmating Force(Kgf) Min |
|------|-----------------------|-------------------------|
| 9 | 4.0 | 1.0 |
| 15 | 6.0 | 1.2 |
| 25 | 9.4 | 1.4 |
| 37 | 13.5 | 1.6 |

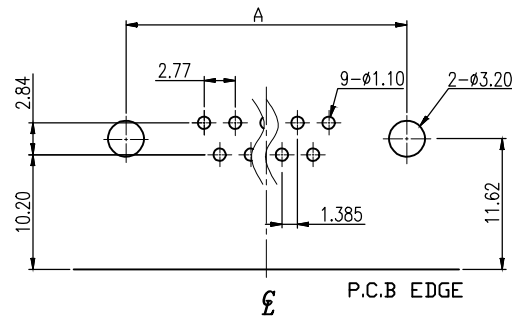


SPECIFICATIONS

1. D-SUB.
- 1.1 Voltage: 250V AC (RMS) Max.
- 1.2 Current Rating: 3 Ampere per Contact.
- 1.3 Contact Resistance: 25 Milliohms Max.
- 1.4 Insulation Resistance: 5000 Megohms Min.
- 1.5 Dielectric Withstanding Voltage: 1000V AC(RMS).
- 1.6 Total Mating Force: See Table1.
- 1.7 Total Unmating Force: See Table1.
- 1.8 Operating Temperature: -55°C to $+85^{\circ}\text{C}$

NOTES

1. MATERIAL:
Housing:PBT, UL 94V-0, Color:Black.
Terminal:Copper Alloy.
Shell:SPCC.
Boardlock:SPCC.
Rivet:Copper Alloy.
2. FINISH:
Terminal:Gold Plated over Nickel at Contact Area.
Tin Plated over Nickel at Solder Area.
Shell:Nickel Plated.
Boardlock:Nickel Plated.
Rivet:Nickel Plated.
3. This Product is LEAD-FREE & RoHS Compliance Product.



RECOMMENDED P.C.B LAYOUT
INSPECTION DIMENSION:(A)~(H)

| Order Information | Part Number | Dimensions(mm) | | | | | | | | | |
|-------------------|--------------------|----------------|--------------|--------------|--------------|--------------|--------------|--------------|--------------|--------------|--------------|
| | | Size | A ± 0.25 | B ± 0.13 | C ± 0.13 | D ± 0.38 | E ± 0.25 | F ± 0.25 | G ± 0.25 | H ± 0.25 | K ± 0.38 |
| | MHDD09-F-T-B-S-RBM | 9 | 24.99 | 16.33 | 2.770 | 3.18 | 10.20 | 2.84 | 11.62 | 14.60 | 30.81 |
| | MHDD15-F-T-B-S-RBM | 15 | 33.32 | 24.66 | 2.770 | 3.18 | 10.20 | 2.84 | 11.62 | 14.60 | 39.19 |
| | MHDD25-F-T-B-S-RBM | 25 | 47.04 | 38.38 | 2.770 | 3.18 | 10.20 | 2.84 | 11.62 | 14.60 | 53.04 |
| | MHDD37-F-T-B-S-RBM | 37 | 63.50 | 54.84 | 2.770 | 3.18 | 10.20 | 2.84 | 11.62 | 14.60 | 69.32 |

THESE DRAWINGS AND SPECIFICATIONS ARE THE PROPERTY OF MH CONNECTORS LTD. AND SHALL NOT BE REPRODUCED, COPIED OR USED AS THE BASIS FOR THE MANUFACTURE OR SALE OF APPARATUS WITHOUT WRITTEN PERMISSION.

DRAWN
Haley
DATE
10-18-13

APPROVED
DATE

SCALE
SHEET OF
1 OF 1
REV:
2.0

DRAWING No
MHDDXX-F-T-B-S-RBM



THIS SERIES FULLY CONFORMS TO THE EUROPEAN UNION DIRECTIVES 2002/95/EC AND 2002/96/EC FOR RoHS COMPLIANCY.



MH CONNECTORS LTD.